



## VOLKSWAGEN Golf: 1HHL019

Vinnnumber:	<b>WVWZZZAUZFP517658</b>	Versionname:	<b>GOLF VAR Trendline 105PK</b>
First Registrationdate:	<b>24/07/2014</b>	Fiscalpower:	
Expertise Mileage:	<b>190120</b>	Power Kw:	<b>77</b>
Bodytype:		Body color:	<b>Dark Blue</b>
Gearbox:	<b>MAN 5 VIT</b>	Paint type:	<b>Metalic</b>
Transmission:	<b>Front</b>	Rims summer:	<b>Steel</b>
Fueltype:	<b>Diesel</b>	Oil level:	<b>OK</b>
Maintenance:	<b>OK</b>	Parking lot:	<b>3412</b>
Battery functioning:	<b>Yes</b>		
Number of doors:	<b>5</b>		
Number of seats:	<b>5</b>		
Number head rests:	<b>5</b>		
Rims summer:	<b>Steel</b>		
Category:	<b>Passenger Car</b>		
Oil level:	<b>OK</b>		
Registration Certificate Car (BE):	<b>Yes</b>		

## Options

Radio CD		Central consol F
GPS storage	<b>SD</b>	Luggage cover
GPS storage		Front parking sensors
Windows electric F		Rear parking sensors
Windows electric R		
Cruise Control		
Steering wheel multifunctional		
Type of headlighting	<b>Headlighting Halogen</b>	
Type of GPS	<b>GPS big screen color</b>	
Type of Lining	<b>Lining fabrics</b>	
Type of climate control	<b>Autom climate control</b>	
Adaptive cruise control		

## Limited Technical Inspection

Airco functioning	<b>OK</b>	Battery functioning	<b>Yes</b>
Tires wear profile	<b>OK</b>	Power steering	<b>Yes</b>
Idle position	<b>OK</b>	Sound engine	<b>OK</b>
Engine startingtime	<b>OK</b>	Clutch test	<b>OK</b>
Exhaust gass	<b>OK</b>	Wiper fluid level	<b>OK</b>
Handbrake	<b>OK</b>	Transmission	<b>OK</b>
		Lighting	<b>OK</b>
		Wiperblades	<b>OK</b>

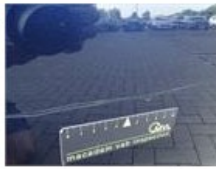
## Degree of wear

	<b>195/65/15/91 H Steel</b>			
Summer tyres:	Fr.L.	<b>Michelin: 6 mm</b>	Fr.R.	<b>Michelin: 6 mm</b>
	Re.L.	<b>Michelin: 7 mm</b>	Re.R.	<b>Michelin: 7 mm</b>

## Assistance equipment

Emergency spare wheel	<b>Yes</b>	Jack	<b>Yes</b>
-----------------------	------------	------	------------

Total cost ex VAT	486,35
Door F R, Scratch(es), Acceptable	0,00
<i>No pictures to display</i>	
Wheel cover F R, Scratch(es), Acceptable	0,00
<i>No pictures to display</i>	
Trunk lid covering R, Scratch(es), Acceptable	0,00
<i>No pictures to display</i>	
Wing R R, Scratch(es), Acceptable	0,00
<i>No pictures to display</i>	
Door F L, Scratch(es), Acceptable	0,00
<i>No pictures to display</i>	
Door R R, Scratch(es), LI - Repair and paint (complete)	318,35



Ignition key, Missing, E - Replace	150,00
------------------------------------	--------

*No pictures to display*

Reflector, Broken, E - Replace	18,00
--------------------------------	-------



Front bumper, Scratch(es), Acceptable	0,00
---------------------------------------	------

*No pictures to display*

Seat cover R L, Stain, Acceptable	0,00
-----------------------------------	------



Door frame R R, Scratch(es), Acceptable	0,00
---	------

*No pictures to display*