



## VOLKSWAGEN GOLF VII: 1KHG846

Vinnumber:	<b>WVWZZZAUZFW321188</b>	Versionname:	<b>1.6 TDI 77KW BMT HIGHLINE</b>
First Registrationdate:	<b>5/05/2015</b>	Fiscalpower:	
Expertise Mileage:	<b>77147</b>	Power Kw:	<b>77</b>
Bodytype:	<b>Hatchback</b>	Body color:	<b>Brown</b>
Gearbox:	<b>MAN 5 VIT</b>	Paint type:	<b>Metalic</b>
Transmission:	<b>Front</b>	Rims summer:	<b>Aluminium</b>
Fueltype:	<b>Diesel</b>	Oil level:	<b>OK</b>
Battery functioning:	<b>Yes</b>	Parking lot:	<b>1426</b>
Number of doors:	<b>5</b>		
Number of seats:	<b>5</b>		
Number head rests:	<b>5</b>		
Rims summer:	<b>Aluminium</b>		
Category:	<b>Passenger Car</b>		
Oil level:	<b>OK</b>		
Registration Certificate Car (BE):	<b>Yes</b>		

## Options

Radio CD	Central consol F
Windows electric F	Luggage cover
Windows electric R	Front parking sensors
Cruise Control	Rear parking sensors
Steering wheel multifunctional	
Radio multimedia	
Type of headlighting	<b>Headlighting Laser</b>
Type of GPS	<b>GPS big screen color</b>
Type of Lining	<b>Lining fabrics</b>
Type of climate control	<b>Autom climate control</b>
Adaptive cruise control	

## Limited Technical Inspection

Airco functioning	<b>OK</b>	Battery functioning	<b>Yes</b>
Tires wear profile	<b>OK</b>	Power steering	<b>Yes</b>
Idle position	<b>OK</b>	Sound engine	<b>OK</b>
Engine startingtime	<b>OK</b>	Clutch test	<b>OK</b>
Exhaust gass	<b>OK</b>	Wiper fluid level	<b>OK</b>
Handbrake	<b>OK</b>	Transmission	<b>OK</b>
		Lighting	<b>OK</b>
		Wiperblades	<b>OK</b>

## Degree of wear

	<b>225/45/17/91 W LightMetal</b>			
Summer tyres:	Fr.L.	<b>Pirelli: 5 mm</b>	Fr.R.	<b>Pirelli: 5 mm</b>
	Re.L.	<b>Pirelli: 6 mm</b>	Re.R.	<b>Pirelli: 6 mm</b>

## Assistance equipment

Emergency spare wheel	<b>Yes</b>	Jack	<b>Yes</b>
-----------------------	------------	------	------------

Total cost ex VAT 1072,22

Rearview mirror housing R, Scratch(es), Smart repair 110,64



Tailgate, Bump(s), Acceptable 0,00

No pictures to display

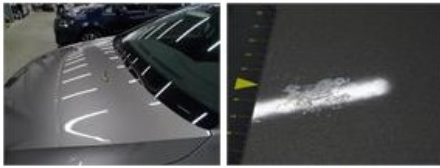
Front bumper, Scratch(es), Acceptable 0,00

No pictures to display

Alloy rim F L, Scratch(es), LI - Repair and paint (complete) 95,00



Bonnet, Chemical polution, LI - Repair and paint (complete)	290,08
---	--------



Roof, Chemical polution, LI - Repair and paint (complete)	481,50
---	--------



Alloy rim R L, Scratch(es), LI - Repair and paint (complete)	95,00
--	-------

