



<b>RENAULT Trafic: FB9097</b>			
Vinnnumber:	<b>VF1FLBHB6BY382342</b>	Versionname:	<b>TRAFIC 29 B/F MWB L2H1 Confort 115PK</b>
First Registrationdate:	<b>10/05/2011</b>	Fiscalpower:	
Expertise Mileage:	<b>247083</b>	Power Kw:	<b>84</b>
Bodytype:	<b>Transporter</b>	Body color:	<b>Silver</b>
Gearbox:	<b>MAN 6 VIT</b>	Paint type:	<b>Metalic</b>
Transmission:	<b>Front</b>	Rims summer:	<b>Steel</b>
Fueltype:	<b>Diesel</b>	Oil level:	<b>OK</b>
Battery functioning:	<b>Yes</b>	Parking lot:	<b>3829</b>
Number of doors:	<b>5</b>		
Number of seats:	<b>3</b>		
Number head rests:	<b>3</b>		
Rims summer:	<b>Steel</b>		
Category:	<b>Light Commercial Vehicle</b>		
Oil level:	<b>OK</b>		

<b>Options</b>	
Windows electric F	
Type of headlighting	<b>Headlighting Halogen</b>
Type of Lining	<b>Lining fabrics</b>

<b>Limited Technical Inspection</b>			
Tires wear profile	<b>OK</b>	Battery functioning	<b>Yes</b>
Idle position	<b>OK</b>	Power steering	<b>Yes</b>
Engine startingtime	<b>OK</b>	Sound engine	<b>OK</b>
Exhaust gass	<b>OK</b>	Clutch test	<b>OK</b>
Handbrake	<b>OK</b>	Wiper fluid level	<b>OK</b>
		Transmission	<b>OK</b>
		Lighting	<b>OK</b>
		Wiperblades	<b>OK</b>

<b>Degree of wear</b>				
	<b>205/65/16/107 T Steel</b>			
Winter tyres:	Fr.L.	<b>Continental: 3 mm</b>	Fr.R.	<b>Continental: 3 mm</b>
	Re.L.	<b>Continental: 5 mm</b>	Re.R.	<b>Continental: 5 mm</b>

<b>Assistance equipment</b>			
Spare wheel	<b>Yes</b>	Jack	<b>Yes</b>
Total cost ex VAT			<b>728,73</b>
Roof, Bump(s) and scratch(es), Acceptable			<b>0,00</b>
<i>No pictures to display</i>			
Wing R L, Bump(s), Acceptable			<b>0,00</b>
<i>No pictures to display</i>			
Door F L, Bad repair, Acceptable			<b>0,00</b>



Front bumper, Bad repair, Acceptable	<b>0,00</b>
--------------------------------------	-------------



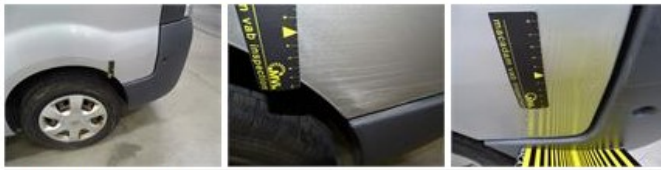
Wing R R, Bump(s) and scratch(es), LI - Repair and paint (complete)	<b>231,15</b>
---	---------------



Bumper R, Bump(s) and scratch(es), Acceptable 0,00

No pictures to display

Wing R L, Bump(s) and scratch(es), It - Spot repair 115,56



Door F R, Bump(s), Acceptable 0,00

No pictures to display

Sliding door R, Scratch(es), LI - Repair and paint (complete) 382,02

