



VOLVO S40: 1DBR828			
Vinnnumber:	YV1MS84F1C2578914	Versionname:	S40 BER DRiVe Start/Stop
First Registrationdate:	3/04/2012	Fiscalpower:	99g 115PK
Expertise Mileage:	94866	Power Kw:	84
Bodytype:		Body color	Grey
Gearbox:	MAN 6 VIT	Paint type	Metalic
Transmission:	Front	Rims summer	Aluminium
Fueltype:	Diesel	Oil level	OK
Maintenance	OK	Parking lot	3527
Battery functioning	Yes		
Number of doors	4		
Number of seats	5		
Number head rests	5		
Rims summer	Aluminium		
Category	Passenger Car		
Oil level	OK		

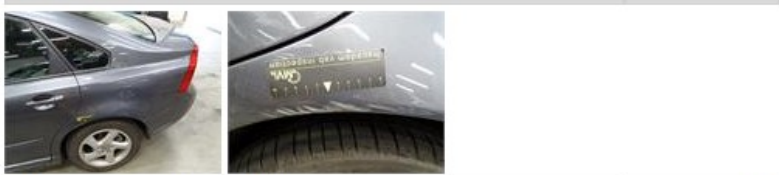
Options	
Radio CD	Central consol F
Windows electric F	Rear parking sensors
Windows electric R	
Cruise Control	
Steering wheel multifunctional	
Type of headlighting	Headlighting Halogen
Type of Lining	Lining fabrics
Type of climate control	Autom climate control

Limited Technical Inspection			
Airco functioning	OK	Battery functioning	Yes
Tires wear profile	OK	Power steering	Yes
Idle position	OK	Sound engine	OK
Engine startingtime	OK	Clutch test	OK
Exhaust gass	OK	Wiper fluid level	OK
Handbrake	OK	Transmission	OK
		Lighting	OK
		Wiperblades	OK

Degree of wear				
	205/55/16/91 V LightMetal			
Summer tyres:	Fr.L.	Michelin: 4 mm	Fr.R.	Michelin: 4 mm
	Re.L.	Michelin: 4 mm	Re.R.	Michelin: 4 mm

Assistance equipment			
Repair kit	Yes	Compressor	Yes

Total cost ex VAT	652,16
Wing R L, Scratch(es), LI - Repair and paint (complete)	0,00



Windscreen, Stone chip(s), Windscreen repair	0,00
--	-------------



Mirror side blinker R, Waterinfiltration, P - Check	0,00
---	-------------



Bonnet, Chemical polution, LI - Repair and paint (complete) 0,00



Wing F L, Bump(s) and scratch(es), LI - Repair and paint (complete) 220,18



Front bumper, Accident, LI - Repair and paint (complete) 211,80



Wing F R, Accident, LI - Repair and paint (complete) 220,18



Maintenance book, Missing, E - Replace 0,00

No pictures to display