



BMW 1: 1GXXG071

| | | | |
|------------------------------------|--------------------------|--------------|-------------------------------|
| Vinnnumber: | WBA1C71030J950850 | Versionname: | 1 BER HATCH 116d 116PK |
| First Registrationdate: | 26/05/2014 | Fiscalpower: | |
| Expertise Mileage: | 127459 | Power Kw: | 85 |
| Bodytype: | | Body color: | Blue |
| Gearbox: | MAN 6 VIT | Paint type: | Metalic |
| Transmission: | Back | Rims summer: | Aluminium |
| Fueltype: | Diesel | Oil level: | OK |
| Maintenance: | OK | Parking lot: | 4503 |
| Maintenance: | IN 24 000 KM | | |
| Battery functioning: | Yes | | |
| Number of doors: | 5 | | |
| Number of seats: | 5 | | |
| Number head rests: | 5 | | |
| Rims summer: | Aluminium | | |
| Category: | Passenger Car | | |
| Oil level: | OK | | |
| Registration Certificate Car (BE): | Yes | | |

Options

| | |
|--------------------------------|------------------------------|
| Radio CD | Central consol F |
| Windows electric F | Luggage cover |
| Windows electric R | Rear parking sensors |
| Cruise Control | |
| Steering wheel multifunctional | |
| Type of headlighting: | Headlighting Halogen |
| Type of Lining: | Lining Alcantara |
| Type of climate control: | Autom climate control |

Limited Technical Inspection

| | | | |
|---------------------|-----------|---------------------|------------|
| Airco functioning | OK | Battery functioning | Yes |
| Tires wear profile | OK | Power steering | Yes |
| Idle position | OK | Sound engine | OK |
| Engine startingtime | OK | Clutch test | OK |
| Exhaust gass | OK | Wiper fluid level | OK |
| Handbrake | OK | Transmission | OK |
| | | Lighting | OK |
| | | Wiperblades | OK |

Degree of wear

| | | | | |
|---------------|----------------------------------|--------------------------|-------|--------------------------|
| | 225/45/17/91 W LightMetal | | | |
| Summer tyres: | Fr.L. | Bridgestone: 6 mm | Fr.R. | Bridgestone: 6 mm |
| | Re.L. | Bridgestone: 6 mm | Re.R. | Bridgestone: 6 mm |

Assistance equipment

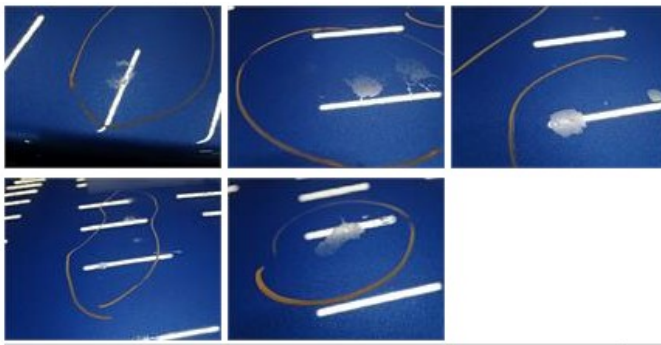
| | | | |
|------------|-----------|------------|-----------|
| Repair kit | No | Compressor | No |
|------------|-----------|------------|-----------|

| | |
|---|---------|
| Total cost ex VAT | 1794,74 |
| Front bumper, Scratch(es), It - Spot repair | 115,56 |



| | |
|---|--------|
| Roof, Chemical polution, LI - Repair and paint (complete) | 481,50 |
|---|--------|





Alloy rim F L, Scratch(es), Acceptable 0,00

No pictures to display

Alloy rim R L, Scratch(es), LI - Repair and paint (complete) 95,00



Bumper R, Bump(s) and scratch(es), Le - Replace and paint 651,00



Wing R R, Scratch(es), Acceptable 0,00

No pictures to display

Door F R, Scratch(es), Acceptable 0,00

No pictures to display

Tailgate, Chemical polution, LI - Repair and paint (complete) 301,68



Tyre repair kit, Missing, E - Replace 150,00

No pictures to display

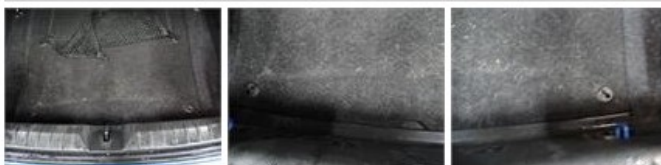
Door R L, Scratch(es), Acceptable 0,00

No pictures to display

Bonnet, Scratch(es), Acceptable 0,00

No pictures to display

Boot carpet, Dirty, Cleaning 0,00





| | |
|--|------|
| Door F R, Scratch(es), Acceptable | 0,00 |
| <i>No pictures to display</i> | |
| Door R R, Scratch(es), Acceptable | 0,00 |
| <i>No pictures to display</i> | |
| Alloy rim R R, Scratch(es), Acceptable | 0,00 |
| <i>No pictures to display</i> | |