



**FORD S Max: 1GGU027**

Vinnnumber:	<b>WF0SXXGBWSDD85624</b>	Versionname:	<b>S-MAX Trend Style DPF</b>
First Registrationdate:	<b>4/02/2014</b>	Fiscalpower:	<b>136PK</b>
Expertise Mileage:	<b>109789</b>	Power Kw:	<b>100</b>
Bodytype:		Body color:	<b>Brown</b>
Gearbox:	<b>MAN 6 VIT</b>	Paint type:	<b>Metalic</b>
Transmission:	<b>Front</b>	Rims summer:	<b>Aluminium</b>
Fueltype:	<b>Diesel</b>	Oil level:	<b>OK</b>
Maintenance:	<b>OK</b>	Parking lot:	<b>2606</b>
Battery functioning:	<b>Yes</b>		
Number of doors:	<b>5</b>		
Number of seats:	<b>7</b>		
Number head rests:	<b>7</b>		
Rims summer:	<b>Aluminium</b>		
Category:	<b>Passenger Car</b>		
Oil level:	<b>OK</b>		
Registration Certificate Car (BE):	<b>Yes</b>		

**Options**

Radio CD		Panoramic roof	
GPS storage	<b>HD</b>	Central consol F	
GPS storage		Luggage cover	
Windows electric F		Front parking sensors	
Windows electric R		Rear parking sensors	
Cruise Control		Type of Tow bar	<b>Tow bar removable</b>
Steering wheel multifunctional			
Seats F heated			
Type of headlighting	<b>Headlighting Halogen</b>		
Type of GPS	<b>GPS big screen color</b>		
Type of Lining	<b>Lining fabrics</b>		
Type of climate control	<b>Autom climate control</b>		

**Limited Technical Inspection**

Airco functioning	<b>OK</b>	Battery functioning	<b>Yes</b>
Tires wear profile	<b>OK</b>	Power steering	<b>Yes</b>
Idle position	<b>OK</b>	Sound engine	<b>OK</b>
Engine startingtime	<b>OK</b>	Clutch test	<b>OK</b>
Exhaust gass	<b>OK</b>	Wiper fluid level	<b>OK</b>
Handbrake	<b>OK</b>	Transmission	<b>OK</b>
		Lighting	<b>OK</b>
		Wiperblades	<b>OK</b>

**Degree of wear**

	<b>225/50/17/98 H LightMetal</b>			
Winter tyres:	Fr.L.	<b>Kleber: 6 mm</b>	Fr.R.	<b>Kleber: 6 mm</b>
	Re.L.	<b>Kleber: 5 mm</b>	Re.R.	<b>Kleber: 5 mm</b>

**Assistance equipment**

Repair kit	<b>Yes</b>	Compressor	<b>Yes</b>
------------	------------	------------	------------

<b>Total cost ex VAT</b>	<b>215,00</b>
--------------------------	---------------

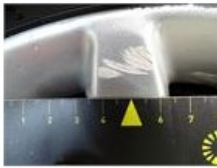
<b>Seat cover R, Stain, Cleaning</b>	<b>25,00</b>
--------------------------------------	--------------



<b>Alloy rim F R, Scratch(es), LI - Repair and paint (complete)</b>	<b>95,00</b>
---------------------------------------------------------------------	--------------



Alloy rim R R, Scratch(es), LI - Repair and paint (complete) 95,00



Ashtray, Not functioning (well), P - Check 0,00



Ignition key, Not functioning (well), Repair/replace (lump sum) 0,00

No pictures to display