



**RENAULT Clio: 1GVY066**

Vinnumber:	<b>VF15RJL0H50895026</b>	Versionname:	<b>CLIO IV BER e-Expression St&amp;St 90PK</b>
First Registrationdate:	<b>15/05/2014</b>	Fiscalpower:	
Expertise Mileage:	<b>48981</b>	Power Kw:	<b>66</b>
Bodytype:	<b>Hatchback</b>	Body color:	<b>Silver</b>
Gearbox:	<b>MAN 5 VIT</b>	Paint type:	<b>Metalic</b>
Transmission:	<b>Front</b>	Rims summer:	<b>Steel</b>
Fueltype:	<b>Diesel</b>	Oil level:	<b>OK</b>
Battery functioning:	<b>Yes</b>	Parking lot:	<b>3711</b>
Number of doors:	<b>5</b>		
Number of seats:	<b>5</b>		
Number head rests:	<b>4</b>		
Rims summer:	<b>Steel</b>		
Category:	<b>Passenger Car</b>		
Oil level:	<b>OK</b>		
Registration Certificate Car (BE):	<b>Yes</b>		

**Options**

GPS storage		Luggage cover	
GPS storage	<b>HD</b>		
Windows electric F			
Cruise Control			
Steering wheel multifunctional			
Type of headlighting	<b>Headlighting Halogen</b>		
Type of GPS	<b>GPS big screen color</b>		
Type of Lining	<b>Lining fabrics</b>		
Type of climate control	<b>Manual climate control</b>		

**Limited Technical Inspection**

Airco functioning	<b>OK</b>	Battery functioning	<b>Yes</b>
Tires wear profile	<b>OK</b>	Power steering	<b>Yes</b>
Idle position	<b>OK</b>	Sound engine	<b>OK</b>
Engine startingtime	<b>OK</b>	Clutch test	<b>OK</b>
Exhaust gass	<b>OK</b>	Wiper fluid level	<b>OK</b>
Handbrake	<b>OK</b>	Transmission	<b>OK</b>
		Lighting	<b>OK</b>
		Wiperblades	<b>OK</b>

**Degree of wear**

	<b>185/65/15/88 T Steel</b>			
Summer tyres:	Fr.L.	<b>Bridgestone: 5 mm</b>	Fr.R.	<b>Bridgestone: 5 mm</b>
	Re.L.	<b>Bridgestone: 4 mm</b>	Re.R.	<b>Bridgestone: 4 mm</b>

**Assistance equipment**

Repair kit	<b>Yes</b>	Compressor	<b>Yes</b>
------------	------------	------------	------------

Total cost ex VAT	<b>1707,52</b>
-------------------	----------------

Wheel cover F R, Scratch(es), E - Replace	<b>24,00</b>
---	--------------

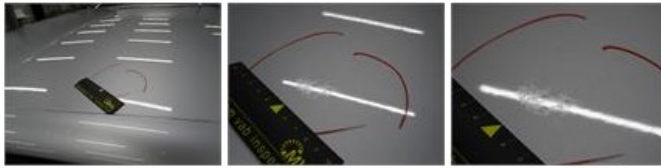


Front bumper, Bump(s) and scratch(es), LI - Repair and paint (complete)	<b>169,44</b>
---	---------------





Roof, Chemical pollution, LI - Repair and paint (complete) 385,20



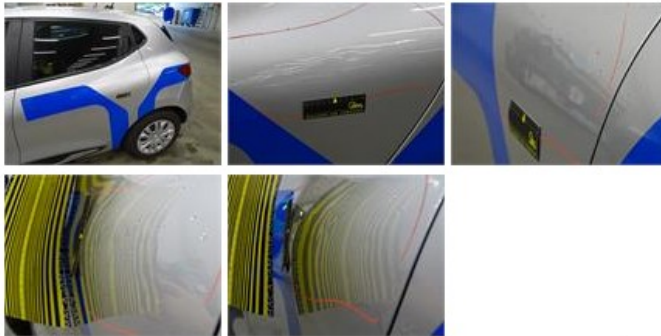
Wheel cover R L, Scratch(es), E - Replace 24,00



Bodywork, Not original part, Acceptable 0,00

No pictures to display

Door R L, Bump(s), LI - Repair and paint (complete) 302,68



Wing R R, Scratch(es), Acceptable 0,00

No pictures to display

Interior, Stain, Cleaning 75,00



Wing F R, Scratch(es), Acceptable 0,00

No pictures to display

Wheel cover F L, Scratch(es), E - Replace 24,00



Wing F L, Stain, Acceptable 0,00

No pictures to display

Windscreen, Damaged, E - Replace 413,76



Door panel R R, Damaged, E - Replace 96,00



Bumper R, Scratch(es), LI - Repair and paint (complete) 169,44



Wheel cover R R, Scratch(es), E - Replace 24,00



Door R R, Bump(s), Acceptable 0,00

No pictures to display