



|                                |                          |              |   |
|--------------------------------|--------------------------|--------------|---|
| <b>RENAULT Megane: 1EYC570</b> |                          |              |   |
| Vinnumber:                     | <b>VF1KZ140648900410</b> | Versionname: | <b>MEGANE GT Energy TomTom Ed.110PK</b> |
| First Registrationdate:        | <b>18/04/2013</b>        | Fiscalpower: |   |
| Expertise Mileage:             | <b>118912</b>            | Power Kw:    | <b>81</b>                               |
| Bodytype:                      | <b>Break</b>             | Body color:  | <b>Dark Brown</b>                       |
| Gearbox:                       | <b>MAN 6 VIT</b>         | Paint type:  | <b>Metalic</b>                          |
| Transmission:                  |                          | Rims summer: | <b>Steel</b>                            |
| Fueltype:                      | <b>Diesel</b>            | Oil level:   | <b>OK</b>                               |
| Battery functioning:           | <b>Yes</b>               | Parking lot: | <b>2206</b>                             |
| Number of doors:               | <b>5</b>                 |              |   |
| Number of seats:               | <b>5</b>                 |              |   |
| Number head rests:             | <b>5</b>                 |              |   |
| Rims summer:                   | <b>Steel</b>             |              |   |
| Category:                      | <b>Passenger Car</b>     |              |   |
| Oil level:                     | <b>OK</b>                |              |   |

|                                |                               |
|--------------------------------|-------------------------------|
| <b>Options</b>                 |                               |
| Radio CD                       | Central consol F              |
| Windows electric F             | Luggage cover                 |
| Windows electric R             | Rear parking sensors          |
| Cruise Control                 |                               |
| Steering wheel multifunctional |                               |
| Radio multimedia               |                               |
| Type of headlighting:          | <b>Headlighting Halogen</b>   |
| Type of GPS:                   | <b>GPS big screen color</b>   |
| Type of Lining:                | <b>Lining fabrics</b>         |
| Type of climate control:       | <b>Manual climate control</b> |

|                                     |           |                     |            |
|-------------------------------------|-----------|---------------------|------------|
| <b>Limited Technical Inspection</b> |           |                     |            |
| Airco functioning                   | <b>OK</b> | Battery functioning | <b>Yes</b> |
| Tires wear profile                  | <b>OK</b> | Power steering      | <b>Yes</b> |
| Idle position                       | <b>OK</b> | Sound engine        | <b>OK</b>  |
| Engine startingtime                 | <b>OK</b> | Clutch test         | <b>OK</b>  |
| Exhaust gass                        | <b>OK</b> | Wiper fluid level   | <b>OK</b>  |
| Handbrake                           | <b>OK</b> | Transmission        | <b>OK</b>  |
|                                     |           | Lighting            | <b>OK</b>  |
|                                     |           | Wiperblades         | <b>OK</b>  |

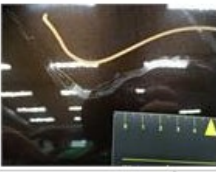
|                       |                             |                       |       |                       |
|-----------------------|-----------------------------|-----------------------|-------|-----------------------|
| <b>Degree of wear</b> |                             |                       |       |                       |
|                       | <b>195/65/15/91 T Steel</b> |                       |       |                       |
| Summer tyres:         | Fr.L.                       | <b>Michelin: 4 mm</b> | Fr.R. | <b>Michelin: 4 mm</b> |
|                       | Re.L.                       | <b>Michelin: 4 mm</b> | Re.R. | <b>Michelin: 4 mm</b> |

|                             |            |      |            |
|-----------------------------|------------|------|------------|
| <b>Assistance equipment</b> |            |      |            |
| Spare wheel                 | <b>Yes</b> | Jack | <b>Yes</b> |

|   |               |
|---|---------------|
| Total cost ex VAT                                       | <b>588,38</b> |
| Wing F L, Scratch(es), LI - Repair and paint (complete) | <b>220,18</b> |

|  |             |
|--|-------------|
|  |             |
| Bumper corner R L, Scratch(es), Acceptable | <b>0,00</b> |

|   |               |
|---|---------------|
| <i>No pictures to display</i>                           |               |
| Wing R L, Scratch(es), LI - Repair and paint (complete) | <b>308,20</b> |



Wheel cover F L, Not original part, E - Replace 30,00



Wheel cover F R, Not original part, E - Replace 30,00



Wheel cover R R, Scratch(es), Acceptable 0,00

No pictures to display