


**BMW 1: 1HTZ506**

|                                    |                          |              |                                       |
|------------------------------------|--------------------------|--------------|---------------------------------------|
| Vinnnumber:                        | <b>WBA1C91090P695985</b> | Versionname: | <b>1 HATCH 116d Eff.Dyn.Ed. 116PK</b> |
| First Registrationdate:            | <b>2/10/2014</b>         | Fiscalpower: |                                       |
| Expertise Mileage:                 | <b>81531</b>             | Power Kw:    | <b>85</b>                             |
| Bodytype:                          |                          | Body color:  | <b>Black</b>                          |
| Gearbox:                           | <b>MAN 6 VIT</b>         | Paint type:  | <b>Metalic</b>                        |
| Transmission:                      |                          | Rims summer: | <b>Steel</b>                          |
| Fueltype:                          | <b>Diesel</b>            | Oil level:   | <b>OK</b>                             |
| Battery functioning:               | <b>Yes</b>               | Parking lot: | <b>4422</b>                           |
| Number of doors:                   | <b>5</b>                 |              |                                       |
| Number of seats:                   | <b>5</b>                 |              |                                       |
| Number head rests:                 | <b>5</b>                 |              |                                       |
| Rims summer:                       | <b>Steel</b>             |              |                                       |
| Category:                          | <b>Passenger Car</b>     |              |                                       |
| Oil level:                         | <b>OK</b>                |              |                                       |
| Registration Certificate Car (BE): | <b>Yes</b>               |              |                                       |

**Options**

|                                |                               |                      |
|--------------------------------|-------------------------------|----------------------|
| Radio CD                       |                               | Central consol F     |
| Windows electric F             |                               | Luggage cover        |
| Windows electric R             |                               | Rear parking sensors |
| Cruise Control                 |                               |                      |
| Steering wheel multifunctional |                               |                      |
| Radio multimedia               |                               |                      |
| Type of headlighting           | <b>Headlighting Halogen</b>   |                      |
| Type of GPS                    | <b>GPS big screen color</b>   |                      |
| Type of Lining                 | <b>Lining fabrics</b>         |                      |
| Type of climate control        | <b>Manual climate control</b> |                      |

**Limited Technical Inspection**

|                     |           |                     |            |
|---------------------|-----------|---------------------|------------|
| Airco functioning   | <b>OK</b> | Battery functioning | <b>Yes</b> |
| Tires wear profile  | <b>OK</b> | Power steering      | <b>Yes</b> |
| Idle position       | <b>OK</b> | Sound engine        | <b>OK</b>  |
| Engine startingtime | <b>OK</b> | Clutch test         | <b>OK</b>  |
| Exhaust gass        | <b>OK</b> | Wiper fluid level   | <b>OK</b>  |
| Handbrake           | <b>OK</b> | Transmission        | <b>OK</b>  |
|                     |           | Lighting            | <b>OK</b>  |
|                     |           | Wiperblades         | <b>OK</b>  |

**Degree of wear**

|               | <b>205/55/16/91 W Steel</b> |                       |       |                       |
|---------------|-----------------------------|-----------------------|-------|-----------------------|
| Summer tyres: | Fr.L.                       | <b>Michelin: 4 mm</b> | Fr.R. | <b>Michelin: 4 mm</b> |
|               | Re.L.                       | <b>Michelin: 5 mm</b> | Re.R. | <b>Michelin: 5 mm</b> |

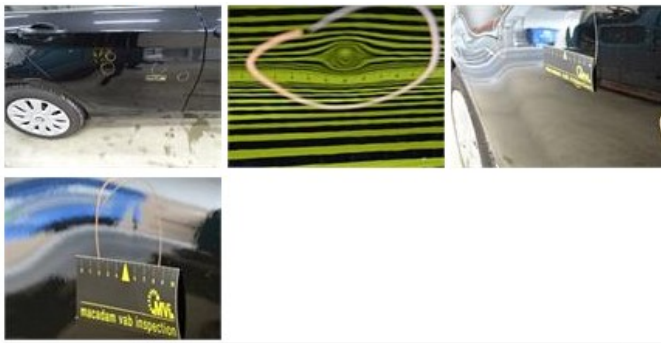
**Assistance equipment**

|            |            |            |            |
|------------|------------|------------|------------|
| Repair kit | <b>Yes</b> | Compressor | <b>Yes</b> |
|------------|------------|------------|------------|

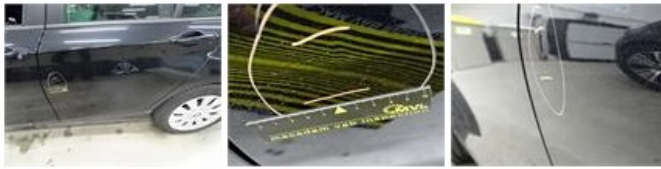
|   |         |
|---|---------|
| Total cost ex VAT                                       | 1452,70 |
| Front bumper, Missing, E - Replace                      | 20,00   |
| <i>No pictures to display</i>                           |         |
| Bumper R, Scratch(es), LI - Repair and paint (complete) | 211,80  |



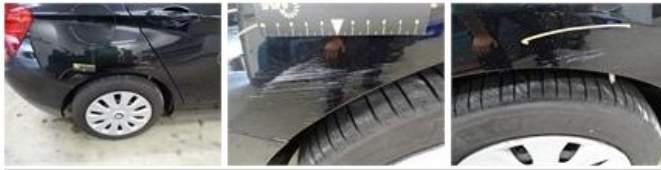
|   |        |
|---|--------|
| Ignition key, Missing, E - Replace                  | 150,00 |
| <i>No pictures to display</i>                       |        |
| Door R R, Bump(s), LI - Repair and paint (complete) | 318,35 |



Door R L, Bump(s), PDR - Knock out without painting 63,00



Wing R R, Scratch(es), LI - Repair and paint (complete) 308,20



Door F R, Scratch(es), LI - Repair and paint (complete) 318,35



Wheel cover F R, Scratch(es), Acceptable 0,00

No pictures to display

Wing R L, Bump(s), PDR - Knock out without painting 63,00



Interior, Dirty, Cleaning 0,00



Front bumper, Scratch(es), Acceptable 0,00

