



## SEAT Altea XL: 1GXC605

Vinnumber:	<b>VSSZZ5PZER019360</b>	Versionname:	<b>ALTEA XL Ecomotive I-Tech 105PK</b>
First Registrationdate:	<b>23/05/2014</b>	Fiscalpower:	
Expertise Mileage:	<b>121132</b>	Power Kw:	<b>77</b>
Bodytype:		Body color	<b>Black</b>
Gearbox:	<b>MAN 6 VIT</b>	Paint type	<b>Metalic</b>
Transmission:		Rims summer	<b>Aluminium</b>
Fueltype:	<b>Diesel</b>	Oil level	<b>OK</b>
Battery functioning	<b>Yes</b>	Parking lot	<b>4826</b>
Number of doors	<b>5</b>		
Number of seats	<b>5</b>		
Number head rests	<b>5</b>		
Rims summer	<b>Aluminium</b>		
Category	<b>Passenger Car</b>		
Oil level	<b>OK</b>		
Registration Certificate Car (BE)	<b>Yes</b>		

## Options

Radio CD		Central consol F	
Windows electric F		Luggage cover	
Windows electric R		Front parking sensors	
Cruise Control		Rear parking sensors	
Steering wheel multifunctional		Type of Tow bar	<b>Tow bar removable</b>
Seats F heated			
Radio multimedia			
Type of headlighting	<b>Headlighting Xenon</b>		
Type of GPS	<b>GPS big screen color</b>		
Type of Lining	<b>Lining fabrics</b>		
Type of climate control	<b>Autom climate control</b>		

## Limited Technical Inspection

Airco functioning	<b>OK</b>	Battery functioning	<b>Yes</b>
Tires wear profile	<b>OK</b>	Power steering	<b>Yes</b>
Idle position	<b>OK</b>	Sound engine	<b>OK</b>
Engine startingtime	<b>OK</b>	Clutch test	<b>OK</b>
Exhaust gass	<b>OK</b>	Wiper fluid level	<b>OK</b>
Handbrake	<b>OK</b>	Transmission	<b>OK</b>
		Lighting	<b>OK</b>
		Wiperblades	<b>OK</b>

## Degree of wear

	<b>205/55/16/91 V LightMetal</b>			
Summer tyres:	Fr.L.	<b>Dunlop: 5 mm</b>	Fr.R.	<b>Dunlop: 5 mm</b>
	Re.L.	<b>Continental: 4 mm</b>	Re.R.	<b>Continental: 4 mm</b>

## Assistance equipment

Emergency spare wheel	<b>Yes</b>	Jack	<b>Yes</b>
-----------------------	------------	------	------------

Total cost ex VAT 697,80

Bumper R, Scratch(es), LI - Repair and paint (complete) 211,80



Alloy rim F R, Scratch(es), LI - Repair and paint (complete)

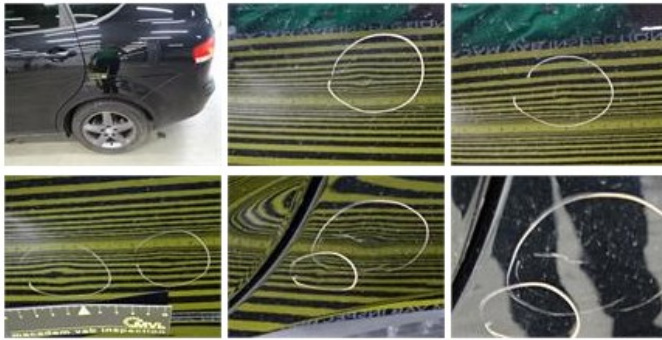
95,00



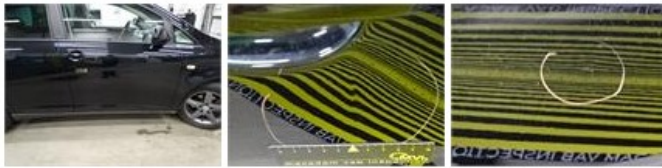
Interior, Dirty, Cleaning 0,00



Wing R L, Bump(s) and scratch(es), LI - Repair and paint (complete) 308,20



Door F R, Bump(s), PDR - Knock out without painting 82,80



Door F L, Scratch(es), Acceptable 0,00

No pictures to display