



RENAULT Clio: 1FBD154

| | | | |
|-------------------------|--------------------------|--------------|-------------------------------|
| Vinnnumber: | VF15R040H49124297 | Versionname: | CLIO IV BER Expression |
| First Registrationdate: | 14/05/2013 | Fiscalpower: | 75PK |
| Expertise Mileage: | 138362 | Power Kw: | 55 |
| Bodytype: | Hatchback | Body color: | Red |
| Gearbox: | MAN 5 VIT | Paint type: | Metalic |
| Transmission: | | Rims summer: | Steel |
| Fueltype: | Diesel | Oil level: | OK |
| Battery functioning: | Yes | Parking lot: | 4222 |
| Number of doors: | 5 | | |
| Number of seats: | 5 | | |
| Number head rests: | 4 | | |
| Rims summer: | Steel | | |
| Category: | Passenger Car | | |
| Oil level: | OK | | |

Options

| | |
|------------------------------|-------------------------------|
| Windows electric F | Luggage cover |
| Cruise Control | |
| Steering wheel multifunction | |
| Radio multimedia | |
| Type of headlighting | Headlighting Halogen |
| Type of GPS | GPS big screen color |
| Type of Lining | Lining fabrics |
| Type of climate control | Manual climate control |

Limited Technical Inspection

| | | | |
|---------------------|-----------|---------------------|------------|
| Airco functioning | OK | Battery functioning | Yes |
| Tires wear profile | OK | Power steering | Yes |
| Idle position | OK | Sound engine | OK |
| Engine startingtime | OK | Clutch test | OK |
| Exhaust gass | OK | Wiper fluid level | OK |
| Handbrake | OK | Transmission | OK |
| | | Lighting | OK |
| | | Wiperblades | OK |

Degree of wear

| | | | | |
|---------------|-----------------------------|-----------------------|-------|-----------------------|
| | 185/65/15/88 T Steel | | | |
| Summer tyres: | Fr.L. | Uniroyal: 6 mm | Fr.R. | Uniroyal: 6 mm |
| | Re.L. | Goodyear: 6 mm | Re.R. | Goodyear: 6 mm |

Assistance equipment

| | |
|------|------------|
| Jack | Yes |
|------|------------|

| | |
|-------------------|---------------|
| Total cost ex VAT | 538,00 |
|-------------------|---------------|

| | |
|---------------------------------------|--------------|
| Protection plate M, Tear, E - Replace | 74,00 |
|---------------------------------------|--------------|



| | |
|---------------------------------------|--------------|
| Wheel cover F R, Damaged, E - Replace | 24,00 |
|---------------------------------------|--------------|





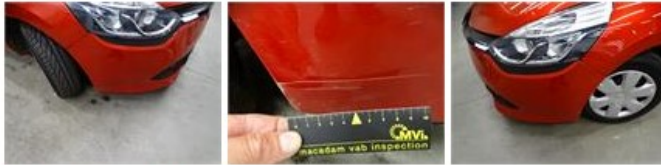
Wing R L, Scratch(es), LI - Repair and paint (complete) 246,56



Wheel cover R R, Scratch(es), Acceptable 0,00

No pictures to display

Front bumper, Scratch(es), LI - Repair and paint (complete) 169,44



Wheel cover F L, Damaged, E - Replace 24,00



Door F L, Scratch(es), Acceptable 0,00

No pictures to display

Bumper corner R L, Scratch(es), Acceptable 0,00

No pictures to display