


**SKODA Octavia: 1EDB131**

Vinnnumber:	<b>TMBHT21Z4D2077323</b>	Versionname:	<b>OCTAVIA COMBI GTec Ambition DPF 105PK</b>
First Registrationdate:	<b>24/10/2012</b>	Fiscalpower:	
Expertise Mileage:	<b>108017</b>	Power Kw:	<b>77</b>
Bodytype:	<b>Break</b>	Body color	<b>Light Grey</b>
Gearbox:	<b>MAN 6 VIT</b>	Paint type	<b>Metalic</b>
Transmission:		Rims summer	<b>Aluminium</b>
Fueltype:	<b>Diesel</b>	Oil level	<b>OK</b>
Battery functioning	<b>Yes</b>	Parking lot	<b>4413</b>
Number of doors	<b>5</b>		
Number of seats	<b>5</b>		
Number head rests	<b>5</b>		
Rims summer	<b>Aluminium</b>		
Category	<b>Passenger Car</b>		
Oil level	<b>OK</b>		

**Options**

Radio CD	Central consol F
Windows electric F	Luggage cover
Cruise Control	Rear parking sensors
Steering wheel multifunctional	
Type of headlighting	<b>Headlighting Halogen</b>
Type of GPS	<b>GPS big screen color</b>
Type of Lining	<b>Lining fabrics</b>
Type of climate control	<b>Autom climate control</b>

**Limited Technical Inspection**

Airco functioning	<b>OK</b>	Battery functioning	<b>Yes</b>
Tires wear profile	<b>OK</b>	Power steering	<b>Yes</b>
Idle position	<b>OK</b>	Sound engine	<b>OK</b>
Engine startingtime	<b>OK</b>	Clutch test	<b>OK</b>
Exhaust gass	<b>OK</b>	Wiper fluid level	<b>OK</b>
Handbrake	<b>OK</b>	Transmission	<b>OK</b>
		Lighting	<b>OK</b>
		Wiperblades	<b>OK</b>

**Degree of wear**

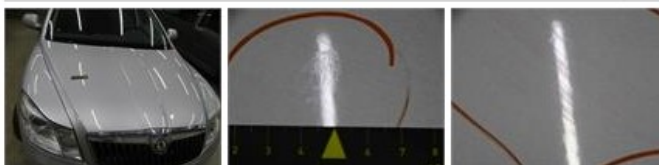
	<b>195/65/15/91 H LightMetal</b>			
Summer tyres:	Fr.L.	<b>Michelin: 4 mm</b>	Fr.R.	<b>Michelin: 4 mm</b>
	Re.L.	<b>Goodyear: 5 mm</b>	Re.R.	<b>Goodyear: 5 mm</b>

**Assistance equipment**

Spare wheel	<b>Yes</b>	Jack	<b>Yes</b>
-------------	------------	------	------------

Total cost ex VAT	2202,73
-------------------	---------

Bonnet, Chemical polution, LI - Repair and paint (complete)	290,08
---	--------



Rearlight R , Damaged, E - Replace	114,00
------------------------------------	--------



Spoiler roof, Chemical polution, LI - Repair and paint (complete)	110,00
---	--------



Sill outer R, Scratch(es), LI - Repair and paint (complete)

310,50



Front bumper, Scratch(es), LI - Repair and paint (complete)

211,80



Wing R R, Scratch(es), LI - Repair and paint (complete)

308,20



Door F R, Scratch(es), LI - Repair and paint (complete)

318,35



Alloy rim R R, Scratch(es), LI - Repair and paint (complete)

95,00



Alloy rim R L, Scratch(es), LI - Repair and paint (complete)

95,00





Foglight R, Damaged, E - Replace

138,00



Bumper R, Scratch(es), LI - Repair and paint (complete)

211,80

