



<b>SKODA Superb: 1CRP346</b>			
Vinnnumber:	<b>TMBAE73T3C9047950</b>	Versionname:	<b>SUPERB BER Ambiente DPF 140PK</b>
First Registrationdate:	<b>10/02/2012</b>	Fiscalpower:	
Expertise Mileage:	<b>177876</b>	Power Kw:	<b>103</b>
Bodytype:		Body color	<b>Brown</b>
Gearbox:	<b>MAN 6 VIT</b>	Paint type	<b>Metalic</b>
Transmission:		Rims summer	<b>Aluminium</b>
Fueltype:	<b>Diesel</b>	Oil level	<b>OK</b>
Battery functioning	<b>Yes</b>	Parking lot	<b>1506</b>
Number of doors	<b>4</b>		
Number of seats	<b>5</b>		
Number head rests	<b>5</b>		
Rims summer	<b>Aluminium</b>		
Category	<b>Passenger Car</b>		
Oil level	<b>OK</b>		

<b>Options</b>			
Radio CD		Seats electric F L	
Windows electric F		Seats electric F R	
Windows electric R		Central consol F	
Cruise Control		Type of Tow bar	<b>Tow bar removable</b>
Steering wheel multifunctional			
Type of headlighting	<b>Headlighting Halogen</b>		
Type of GPS	<b>GPS big screen color</b>		
Type of Lining	<b>Lining leather</b>		
Type of climate control	<b>Autom climate control</b>		

<b>Limited Technical Inspection</b>			
Airco functioning	<b>OK</b>	Battery functioning	<b>Yes</b>
Tires wear profile	<b>OK</b>	Power steering	<b>Yes</b>
Idle position	<b>OK</b>	Sound engine	<b>OK</b>
Engine startingtime	<b>OK</b>	Clutch test	<b>OK</b>
Exhaust gass	<b>OK</b>	Wiper fluid level	<b>OK</b>
Handbrake	<b>OK</b>	Transmission	<b>OK</b>
		Lighting	<b>OK</b>
		Wiperblades	<b>OK</b>

<b>Degree of wear</b>				
	<b>205/55/16/91 H LightMetal</b>			
Winter tyres:	Fr.L.	<b>Michelin: 5 mm</b>	Fr.R.	<b>Michelin: 5 mm</b>
	Re.L.	<b>Fulda: 8 mm</b>	Re.R.	<b>Fulda: 8 mm</b>

<b>Assistance equipment</b>			
Spare wheel	<b>Yes</b>	Jack	<b>Yes</b>

Total cost ex VAT	<b>751,86</b>
Wing R R, Scratch(es), LI - Repair and paint (complete)	<b>369,84</b>



Wing R L, Scratch(es), Acceptable	<b>0,00</b>
<i>No pictures to display</i>	
Door panel R R, Scratch(es), Acceptable	<b>0,00</b>

No pictures to display

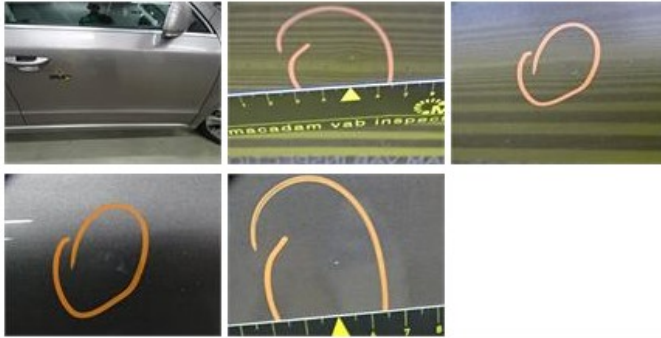
Alloy rim F R, Scratch(es), LI - Repair and paint (complete) 0,00



Alloy rim R R, Scratch(es), LI - Repair and paint (complete) 0,00



Door F R, Bump(s) and scratch(es), LI - Repair and paint (complete) 382,02



Door panel R L, Scratch(es), Acceptable 0,00

No pictures to display