



**VOLVO XC90: PII423**

Vinnumber:	<b>YV1CZ799741079697</b>	Versionname:	
First Registrationdate:	<b>23/03/2004</b>	Fiscalpower:	
Expertise Mileage:	<b>190604</b>	Power Kw:	<b>120</b>
Bodytype:	<b>MPV</b>	Body color:	<b>Black</b>
Gearbox:	<b>MAN 6 VIT</b>	Paint type:	<b>Metalic</b>
Transmission:		Rims summer:	<b>Aluminium</b>
Fueltype:	<b>Diesel</b>	Oil level:	<b>OK</b>
Battery functioning:	<b>Yes</b>		
Number of doors:	<b>5</b>		
Number of seats:	<b>7</b>		
Number head rests:	<b>7</b>		
Rims summer:	<b>Aluminium</b>		
Category:	<b>Passenger Car</b>		
Oil level:	<b>OK</b>		

**Options**

Radio CD	Sun Roof electric
Windows electric F	Central consol F
Windows electric R	Luggage cover
Cruise Control	Rear parking sensors
Steering wheel multifunctional	
Type of headlighting:	<b>Headlighting Halogen</b>
Type of Lining:	<b>Lining leather</b>
Type of climate control:	<b>Autom climate control</b>

**Limited Technical Inspection**

Airco functioning	<b>OK</b>	Battery functioning	<b>Yes</b>
Tires wear profile	<b>OK</b>	Power steering	<b>Yes</b>
Idle position	<b>OK</b>	Sound engine	<b>NOT OK</b>
Engine startingtime	<b>OK</b>	Clutch test	<b>OK</b>
Exhaust gass	<b>OK</b>	Wiper fluid level	<b>OK</b>
Handbrake	<b>OK</b>	Transmission	<b>OK</b>
		Lighting	<b>OK</b>
		Wiperblades	<b>OK</b>

**Degree of wear**

	<b>235/65/17/108 H LightMetal</b>			
Winter tyres:	Fr.L.	<b>Michelin: 5 mm</b>	Fr.R.	<b>Michelin: 5 mm</b>
	Re.L.	<b>Michelin: 6 mm</b>	Re.R.	<b>Michelin: 6 mm</b>

**Assistance equipment**

Spare wheel	<b>Yes</b>
-------------	------------

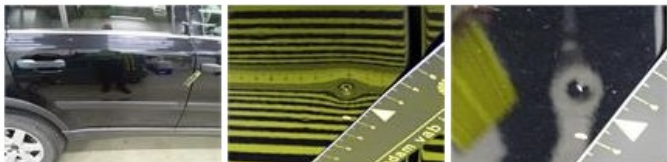
Total cost ex VAT	<b>1663,76</b>
Rearview mirror housing L, Damaged, E - Replace	<b>110,00</b>

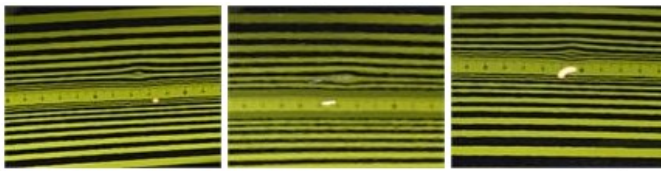


Door F L, Bump(s), Acceptable	<b>0,00</b>
-------------------------------	-------------

*No pictures to display*

Door R R, Bump(s) and scratch(es), LI - Repair and paint (complete)	<b>382,02</b>
---	---------------





Rear window, Scratch(es), E - Replace 420,00



Rocker panel inner F R, Bump(s) and scratch(es), LI - Repair and paint (complete) 115,56



Front bumper, Scratch(es), LI - Repair and paint (complete) 254,16



Door R L, Bump(s) and scratch(es), LI - Repair and paint (complete) 382,02



Headlight R, Scratch(es), Acceptable 0,00

No pictures to display