



BMW 1 HATCH: 1LJJ696

Vinnumber:	WBA1V910705B19286	Versionname:	1.5 116D EFFICIENTDYNAMICS EDIT. (85KW)
First Registrationdate:	5/10/2015	Fiscalpower:	
Expertise Mileage:	33876	Power Kw:	85
Bodytype:		Body color:	Silver
Gearbox:	MAN 6 VIT	Paint type:	Metalic
Transmission:	Back	Rims summer:	Aluminium
Fueltype:	Diesel	Oil level:	OK
Battery functioning:	Yes	Parking lot:	3231
Number of doors:	5		
Number of seats:	5		
Number head rests:	5		
Rims summer:	Aluminium		
Category:	Passenger Car		
Oil level:	OK		
Registration Certificate Car (BE):	Yes		

Options

Radio CD	Central consol F
GPS storage	Luggage cover
GPS storage	HD Rear parking sensors
Windows electric F	
Windows electric R	
Cruise Control	
Steering wheel multifunctional	
Radio multimedia	
Type of headlighting	Headlighting Halogen
Type of GPS	GPS big screen color
Type of Lining	Lining fabrics
Type of climate control	Autom climate control
Adaptive cruise control	

Limited Technical Inspection

Airco functioning	OK	Battery functioning	Yes
Tires wear profile	OK	Power steering	Yes
Idle position	OK	Sound engine	OK
Engine startingtime	OK	Clutch test	OK
Exhaust gass	OK	Wiper fluid level	OK
Handbrake	OK	Transmission	OK
		Lighting	OK
		Wiperblades	OK

Degree of wear

	205/55/16/91 H LightMetal			
Winter tyres:	Fr.L.	Michelin: 4 mm	Fr.R.	Michelin: 4 mm
	Re.L.	Michelin: 4 mm	Re.R.	Michelin: 4 mm

Assistance equipment

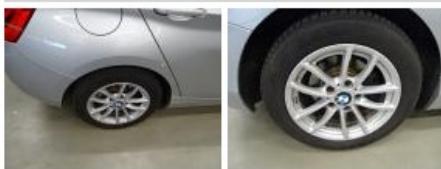
Repair kit	Yes	Compressor	Yes
------------	------------	------------	------------

Total cost ex VAT	568,80
-------------------	--------

Wing F R, Scratch(es), Acceptable	0,00
-----------------------------------	------

No pictures to display

Alloy rim R R, Scratch(es), LI - Repair and paint (complete)	95,00
--	-------



Alloy rim F L, Scratch(es), LI - Repair and paint (complete)	95,00
--	-------



Wing R R, Bump(s), Acceptable	0,00
-------------------------------	------

No pictures to display

Bumper R, Bump(s), LI - Repair and paint (complete)	283,80
---	--------



Windscreen, Stone chip(s), Acceptable	0,00
---------------------------------------	------

No pictures to display

Alloy rim F R, Scratch(es), LI - Repair and paint (complete)	95,00
--	-------



Door R L, Bump(s), Acceptable	0,00
-------------------------------	------

No pictures to display