



FORD S Max: 1FAD063			
Vinnumber:	<b>WF0SXXGBWSDM10411</b>	Versionname:	<b>S-MAX Titanium DPF</b>
First Registrationdate:	<b>3/05/2013</b>	Fiscalpower:	<b>136PK</b>
Expertise Mileage:	<b>129109</b>	Power Kw:	<b>100</b>
Bodytype:	<b>MPV</b>	Body color:	<b>Brown</b>
Gearbox:	<b>MAN 6 VIT</b>	Paint type:	<b>Metalic</b>
Transmission:	<b>Front</b>	Rims summer:	<b>Aluminium</b>
Fueltype:	<b>Diesel</b>	Oil level:	<b>OK</b>
Maintenance:	<b>OK</b>	Parking lot:	<b>2130</b>
Battery functioning:	<b>Yes</b>		
Number of doors:	<b>5</b>		
Number of seats:	<b>5</b>		
Number head rests:	<b>5</b>		
Rims summer:	<b>Aluminium</b>		
Category:	<b>Passenger Car</b>		
Oil level:	<b>OK</b>		

Options			
Radio CD		Seats electric F L	
GPS storage		Seats electric F R	
GPS storage	<b>HD</b>	Central consol F	
Windows electric F		Luggage cover	
Windows electric R		Front parking sensors	
Cruise Control		Rear parking sensors	
Steering wheel multifunctional		Type of Tow bar	<b>Tow bar removable</b>
Type of headlighting	<b>Headlighting Halogen</b>		
Type of GPS	<b>GPS big screen color</b>		
Type of Lining	<b>Lining leather</b>		
Type of climate control	<b>Autom climate control</b>		

Limited Technical Inspection			
Airco functioning	<b>OK</b>	Battery functioning	<b>Yes</b>
Tires wear profile	<b>OK</b>	Power steering	<b>Yes</b>
Idle position	<b>OK</b>	Sound engine	<b>OK</b>
Engine startingtime	<b>OK</b>	Clutch test	<b>OK</b>
Exhaust gass	<b>OK</b>	Wiper fluid level	<b>OK</b>
Handbrake	<b>OK</b>	Transmission	<b>OK</b>
		Lighting	<b>OK</b>
		Wiperblades	<b>OK</b>

Degree of wear				
	<b>225/50/17/98 V LightMetal</b>			
Winter tyres:	Fr.L.	<b>Bridgestone: 4 mm</b>	Fr.R.	<b>Bridgestone: 4 mm</b>
	Re.L.	<b>Bridgestone: 4 mm</b>	Re.R.	<b>Bridgestone: 4 mm</b>

Assistance equipment			
Repair kit	<b>Yes</b>	Compressor	<b>Yes</b>
Total cost ex VAT			<b>746,82</b>
Door F L, Scratch(es), Acceptable			<b>0,00</b>
<i>No pictures to display</i>			
Seat cover F L, Deformed, Acceptable			<b>0,00</b>



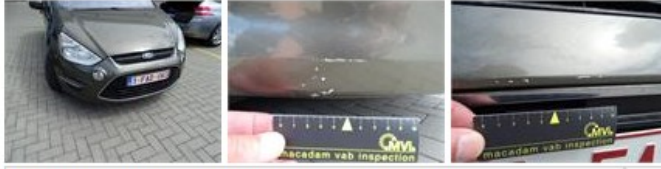
Bumper R, Scratch(es), Smart repair			<b>110,64</b>
-------------------------------------	--	--	---------------



Trunk lid covering R, Scratch(es), Acceptable 0,00

No pictures to display

Front bumper, Scratch(es), LI - Repair and paint (complete) 254,16



Door F R, Scratch(es), LI - Repair and paint (complete) 382,02

