



OPEL Ampera: 1BPZ413

Vinnumber:	1G0R86E45CU100149	Versionname:	AMPERA E-REV 86PK Aut.
First Registrationdate:	1/08/2011	Fiscalpower:	
Expertise Mileage:	176169	Power Kw:	63
Bodytype:		Body color:	Grey
Gearbox:	Automatic	Paint type:	Metalic
Transmission:	Front	Rims summer:	Aluminium
Fueltype:	Hybrid Petrol	Oil level:	OK
Maintenance:	OK	Parking lot:	4709
Battery functioning:	Yes		
Number of doors:	5		
Number of seats:	4		
Number head rests:	4		
Rims summer:	Aluminium		
Category:	Passenger Car		
Oil level:	OK		

Options

Radio CD		Central consol F
GPS storage	HD	Luggage cover
GPS storage		Front parking sensors
Windows electric F		Rear parking sensors
Windows electric R		
Cruise Control		
Steering wheel multifunctional		
Seats F heated		
Type of headlighting	Headlighting Halogen	
Type of GPS	GPS big screen color	
Type of Lining	Lining leather	
Type of climate control	Autom climate control	

Limited Technical Inspection

Airco functioning	OK	Battery functioning	Yes
Tires wear profile	OK	Power steering	Yes
Idle position	OK	Sound engine	OK
Engine startingtime	OK	Clutch test	OK
Exhaust gass	OK	Wiper fluid level	OK
Handbrake	OK	Transmission	OK
		Lighting	OK
		Wiperblades	OK

Degree of wear

	215/55/17/94 W LightMetal			
Summer tyres:	Fr.L.	Goodyear: 2 mm	Fr.R.	Goodyear: 2 mm
	Re.L.	Pirelli: 5 mm	Re.R.	Pirelli: 5 mm

Assistance equipment

Repair kit	Yes	Compressor	Yes
------------	------------	------------	------------

Total cost ex VAT	2390,16
Door F R, Scratch(es), LI - Repair and paint (complete)	318,35

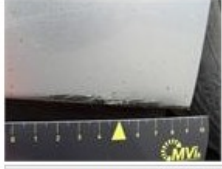
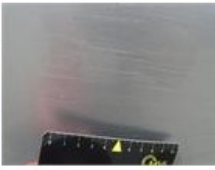


Wing F R, Bump(s), PDR - Knock out without painting	63,00
---	--------------



Front bumper, Scratch(es), LI - Repair and paint (complete)

211,80



Sill outer R, Damaged, Le - Replace and paint

712,00



Backrest cover R L, Worn, Acceptable

0,00



Bumper R, Scratch(es), LI - Repair and paint (complete)

318,35



Backrest cover R R, Worn, Acceptable

0,00



Door F L, Bump(s) and scratch(es), LI - Repair and paint (complete)

318,35



Bumper moulding F, Damaged, E - Replace

14,40



Door R R, Scratch(es), LI - Repair and paint (complete)

318,35



Alloy rim F R polished, Scratch(es), Acceptable	0,00
<i>No pictures to display</i>	
Door frame R R, Bump(s) and scratch(es), It - Spot repair	115,56

