


MERCEDES CLA: 1HDH233

Vinnumber:	WDD1173011N106776	Versionname:	CLA BER 200 CDI 136PK
First Registrationdate:	24/06/2014	Fiscalpower:	
Expertise Mileage:	101455	Power Kw:	100
Bodytype:		Body color:	Grey
Gearbox:	MAN 6 VIT	Paint type:	Metalic
Transmission:	Front	Rims summer:	Aluminium
Fueltype:	Diesel	Oil level:	OK
Maintenance:	SERVICE A IN 6900KM	Parking lot:	1404
Maintenance:	OK		
Battery functioning:	Yes		
Number of doors:	4		
Number of seats:	5		
Number head rests:	5		
Rims summer:	Aluminium		
Category:	Passenger Car		
Oil level:	OK		
Registration Certificate Car (BE):	Yes		

Options

Radio CD		Seats electric F L	
GPS storage		Central consol F	
GPS storage	HD	Front parking sensors	
Windows electric F		Rear parking sensors	
Windows electric R		Type of Tow bar	Tow bar removable
Cruise Control			
Steering wheel multifunctional			
Seats F heated			
Type of headlighting	Headlighting Halogen		
Type of GPS	GPS big screen color		
Type of Lining	Lining leather and alcantara		
Type of climate control	Autom climate control		

Limited Technical Inspection

Airco functioning	OK	Battery functioning	Yes
Tires wear profile	OK	Power steering	Yes
Idle position	OK	Sound engine	OK
Engine startingtime	OK	Clutch test	OK
Exhaust gass	OK	Wiper fluid level	OK
Handbrake	OK	Transmission	OK
		Lighting	OK
		Wiperblades	OK

Degree of wear

	225/40/18/92 V LightMetal			
Winter tyres:	Fr.L.	Kleber: 6 mm	Fr.R.	Kleber: 6 mm
	Re.L.	Michelin: 7 mm	Re.R.	Michelin: 7 mm

Assistance equipment

Repair kit	Yes	Compressor	Yes
------------	------------	------------	------------

Total cost ex VAT	973,15
-------------------	--------

Rearview mirror housing R, Stone chip(s), Acceptable	0,00
--	------

No pictures to display

Alloy rim R R polished, Scratch(es), LI - Repair and paint (complete)	95,00
---	-------





Wing F R, Scratch(es), Acceptable 0,00

No pictures to display

Alloy rim F L polished, Rust, LI - Repair and paint (complete) 95,00



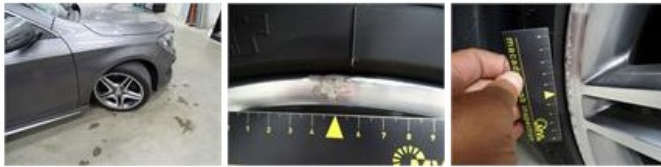
Wing F L, Scratch(es), Acceptable 0,00

No pictures to display

Bumper R, Scratch(es), Acceptable 0,00

No pictures to display

Alloy rim F R polished, Rust, LI - Repair and paint (complete) 95,00



Alloy rim R L polished, Scratch(es), LI - Repair and paint (complete) 95,00



Roof pillar R, Bump(s), PDR - Knock out without painting 63,00



Door R L, Scratch(es), LI - Repair and paint (complete) 318,35



Front bumper, Bump(s) and scratch(es), LI - Repair and paint (complete) 211,80

