



**MERCEDES VITO: TXAB631**

Vinnnumber:	<b>WDF44770513134531</b>	Versionname:	
First Registrationdate:	<b>9/02/2016</b>	Fiscalpower:	
Expertise Mileage:	<b>326082</b>	Power Kw:	<b>120</b>
Bodytype:		Body color:	<b>Black</b>
Gearbox:	<b>Automatic</b>	Paint type:	<b>Metalic</b>
Transmission:	<b>Back</b>	Rims summer:	<b>Aluminium</b>
Fueltype:	<b>Diesel</b>	Oil level:	<b>OK</b>
Maintenance:	<b>OK</b>	Parking lot:	<b>3625</b>
Battery functioning:	<b>Yes</b>		
Number of doors:	<b>4</b>		
Number of seats:	<b>9</b>		
Number head rests:	<b>9</b>		
Rims summer:	<b>Aluminium</b>		
Category:	<b>Passenger Car</b>		
Oil level:	<b>OK</b>		
Registration Certificate Car (BE):	<b>Yes</b>		

**Options**

GPS storage	<b>HD</b>	Front parking sensors
GPS storage		Rear parking sensors
Windows electric F		
Cruise Control		
Steering wheel multifunctional		
Type of headlighting	<b>Headlighting Halogen</b>	
Type of GPS	<b>GPS big screen color</b>	
Type of Lining	<b>Lining leather</b>	
Type of climate control	<b>Manual climate control</b>	

**Limited Technical Inspection**

Airco functioning	<b>OK</b>	Battery functioning	<b>Yes</b>
Tires wear profile	<b>OK</b>	Power steering	<b>Yes</b>
Idle position	<b>OK</b>	Sound engine	<b>OK</b>
Engine startingtime	<b>OK</b>	Clutch test	<b>OK</b>
Exhaust gass	<b>OK</b>	Wiper fluid level	<b>OK</b>
Handbrake	<b>OK</b>	Transmission	<b>OK</b>
		Lighting	<b>OK</b>
		Wiperblades	<b>OK</b>

**Degree of wear**

	<b>205/65/16/107 R LightMetal</b>			
Summer tyres:	Fr.L.	<b>Michelin: 4 mm</b>	Fr.R.	<b>Michelin: 4 mm</b>
	Re.L.	<b>Michelin: 8 mm</b>	Re.R.	<b>Michelin: 8 mm</b>

**Assistance equipment**

Spare wheel	<b>Yes</b>	Jack	<b>Yes</b>
-------------	------------	------	------------

Total cost ex VAT 3269,38

Tyre F R, Damaged, E - Replace 105,00



Bonnet, Bump(s), PDR - Knock out without painting 198,60



Alloy rim F L, Scratch(es), LI - Repair and paint (complete) 95,00



Alloy rim F R, Damaged, E - Replace 182,40



Rearview mirror L complete, Damaged, E - Replace 138,00



Wing F R, Scratch(es), LI - Repair and paint (complete) 165,13



Wing R L, Bump(s) and scratch(es), LI - Repair and paint (complete) 231,15



Roof, Scratch(es), Acceptable 0,00

No pictures to display

Dashboard, Hole, Acceptable 0,00



Door F R, Scratch(es), LI - Repair and paint (complete) 238,76





Seat cover F L, Tear, E - Replace 300,00



Rearview mirror housing R, Scratch(es), Smart repair 110,64



Alloy rim R R, Scratch(es), LI - Repair and paint (complete) 95,00



Tailgate, Bump(s), PDR - Knock out without painting 159,00



Supplementary brake lights, Damaged, E - Replace 33,00



Wheel arch cover R R, Deformed, Acceptable 0,00



Door F L, Bump(s), PDR - Knock out without painting 181,80



Bumper R, Scratch(es), Acceptable 0,00

No pictures to display

Air vent mid-dashboard, Damaged, E - Replace 153,00





Wing R R, Bump(s) and scratch(es), LI - Repair and paint (complete) 231,15



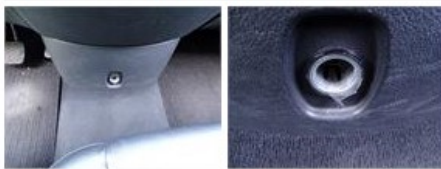
Wing F L, Bump(s), PDR - Knock out without painting 63,00



Door R R, Bad repair, Paint 0,00



Cigar lighter, Not functioning (well), E - Replace 13,50



Front bumper, Damaged, Le - Replace and paint 575,25

