


**TOYOTA GRAND PRIUS+: 1NSJ623**

Vinnnumber:	<b>JTDZS3EU30J007775</b>	Versionname:	<b>1.8 VVT-I HYBRID ACTIVE</b>
First Registrationdate:	<b>15/04/2016</b>	Fiscalpower:	<b>AUTO</b>
Expertise Mileage:	<b>30865</b>	Power Kw:	<b>73</b>
Bodytype:		Body color:	<b>BLEU</b>
Gearbox:	<b>Automatic</b>	Body color:	<b>Blue</b>
Transmission:	<b>Front</b>	Paint type:	<b>Metalic</b>
Fueltype:	<b>Hybrid Petrol</b>	Rims summer:	<b>Steel</b>
Battery functioning:	<b>Yes</b>	Oil level:	<b>OK</b>
Number of doors:	<b>5</b>	Parking lot:	<b>3305</b>
Number of seats:	<b>7</b>		
Number head rests:	<b>7</b>		
Rims summer:	<b>Steel</b>		
Category:	<b>Passenger Car</b>		
Oil level:	<b>OK</b>		
Registration Certificate Car (BE):	<b>Yes</b>		

**Options**

Radio CD		Central consol F
Windows electric F		Luggage cover
Windows electric R		Front parking sensors
Cruise Control		Rear parking sensors
Radio multimedia		
Type of headlighting	<b>Headlighting LED</b>	
Type of GPS	<b>GPS big screen color</b>	
Type of Lining	<b>Lining fabrics</b>	
Type of climate control	<b>Autom climate control</b>	

**Limited Technical Inspection**

Airco functioning	<b>OK</b>	Battery functioning	<b>Yes</b>
Tires wear profile	<b>OK</b>	Power steering	<b>Yes</b>
Idle position	<b>OK</b>	Sound engine	<b>OK</b>
Engine startingtime	<b>OK</b>	Clutch test	<b>OK</b>
Exhaust gass	<b>OK</b>	Wiper fluid level	<b>OK</b>
Handbrake	<b>OK</b>	Transmission	<b>OK</b>
		Lighting	<b>OK</b>
		Wiperblades	<b>OK</b>

**Degree of wear**

	<b>205/60/16/92 V Steel</b>			
Summer tyres:	Fr.L.	<b>Michelin: 4 mm</b>	Fr.R.	<b>Michelin: 4 mm</b>
	Re.L.	<b>Michelin: 4 mm</b>	Re.R.	<b>Michelin: 4 mm</b>

**Assistance equipment**

Emergency spare wheel	<b>Yes</b>	Jack	<b>Yes</b>
-----------------------	------------	------	------------

Total cost ex VAT	1250,15
Steering wheel, Scratch(es), Acceptable	0,00



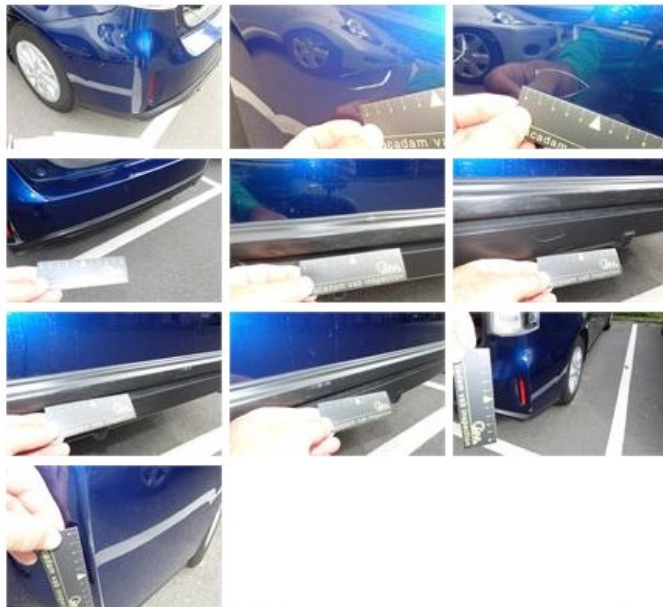
Wing R R, Bump(s), Acceptable	0,00
<i>No pictures to display</i>	
Door panel F L, Scratch(es), Acceptable	0,00
<i>No pictures to display</i>	
Rocker panel inner R L, Scratch(es), Acceptable	0,00
<i>No pictures to display</i>	
Door R L, Bump(s) and scratch(es), LI - Repair and paint (complete)	1038,35



Front bumper, Stone chip(s), Acceptable	0,00
<i>No pictures to display</i>	
Wing R L, Bump(s), Acceptable	0,00
<i>No pictures to display</i>	
Trunk lid covering R, Scratch(es), Acceptable	0,00
<i>No pictures to display</i>	
Door panel F R, Scratch(es), Acceptable	0,00



Wheel cover F R, Scratch(es), Acceptable	0,00
<i>No pictures to display</i>	
Door F R, Scratch(es), Acceptable	0,00
<i>No pictures to display</i>	
Internal Boot Lining R, Scratch(es), Acceptable	0,00
<i>No pictures to display</i>	
Internal Boot Lining L, Scratch(es), Acceptable	0,00
<i>No pictures to display</i>	
Bumper R, Scratch(es), LI - Repair and paint (complete)	211,80



Bonnet, Stone chip(s), Acceptable	0,00
<i>No pictures to display</i>	
Door R R, Scratch(es), Acceptable	0,00
<i>No pictures to display</i>	