


**BMW 1: 1FBE119**

Vinnnumber:	<b>WBA1C91030J511370</b>	Versionname:	<b>1 HATCH 116d Eff.Dyn.Ed. 116PK</b>
First Registrationdate:	<b>14/05/2013</b>	Fiscalpower:	
Expertise Mileage:	<b>110546</b>	Power Kw:	<b>85</b>
Bodytype:	<b>Hatchback</b>	Body color:	<b>Dark Blue</b>
Gearbox:	<b>MAN 6 VIT</b>	Paint type:	<b>Metalic</b>
Transmission:	<b>Back</b>	Rims summer:	<b>Aluminium</b>
Fueltype:	<b>Diesel</b>	Oil level:	<b>OK</b>
Battery functioning:	<b>Yes</b>	Parking lot:	<b>1428</b>
Number of doors:	<b>5</b>		
Number of seats:	<b>5</b>		
Number head rests:	<b>5</b>		
Rims summer:	<b>Aluminium</b>		
Category:	<b>Passenger Car</b>		
Oil level:	<b>OK</b>		

**Options**

Radio CD	Central consol F
Windows electric F	Luggage cover
Windows electric R	
Steering wheel multifunctional	
Radio multimedia	
Type of headlighting	<b>Headlighting Halogen</b>
Type of GPS	<b>GPS big screen color</b>
Type of Lining	<b>Lining fabrics</b>
Type of climate control	<b>Manual climate control</b>

**Limited Technical Inspection**

Airco functioning	<b>OK</b>	Battery functioning	<b>Yes</b>
Tires wear profile	<b>OK</b>	Power steering	<b>Yes</b>
Idle position	<b>OK</b>	Sound engine	<b>OK</b>
Engine startingtime	<b>OK</b>	Clutch test	<b>OK</b>
Exhaust gass	<b>OK</b>	Wiper fluid level	<b>OK</b>
Handbrake	<b>OK</b>	Transmission	<b>OK</b>
		Lighting	<b>OK</b>
		Wiperblades	<b>OK</b>

**Degree of wear**

	<b>205/55/16/91 W LightMetal</b>			
Summer tyres:	Fr.L.	<b>Michelin: 5 mm</b>	Fr.R.	<b>Michelin: 5 mm</b>
	Re.L.	<b>Michelin: 4 mm</b>	Re.R.	<b>Michelin: 4 mm</b>

**Assistance equipment**

Repair kit	<b>Yes</b>	Compressor	<b>Yes</b>
------------	------------	------------	------------

Total cost ex VAT	481,50
-------------------	--------

Alloy rim F L, Scratch(es), Acceptable	0,00
--	------

*No pictures to display*

Door F L, Scratch(es), Acceptable	0,00
-----------------------------------	------

*No pictures to display*

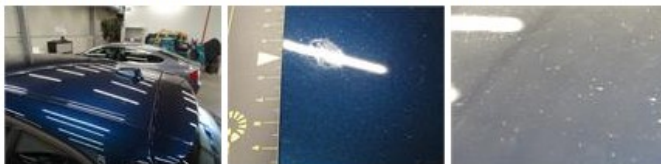
Wing F R, Scratch(es), Acceptable	0,00
-----------------------------------	------

*No pictures to display*

Front bumper, Scratch(es), Acceptable	0,00
---------------------------------------	------

*No pictures to display*

Roof, Chemical polution, LI - Repair and paint (complete)	481,50
---	--------



Door R L, Scratch(es), Acceptable	0,00
-----------------------------------	------

*No pictures to display*