



BMW X1: 1EDX403			
Vinnumber:	<b>WBAVN71080VX01271</b>	Versionname:	<b>X1 sDrive18 136PK</b>
First Registrationdate:	<b>2/11/2012</b>	Fiscalpower:	
Expertise Mileage:	<b>119415</b>	Power Kw:	<b>100</b>
Bodytype:	<b>SUV</b>	Body color:	<b>Silver</b>
Gearbox:	<b>MAN 6 VIT</b>	Paint type:	<b>Metalic</b>
Transmission:	<b>Back</b>	Rims summer:	<b>Aluminium</b>
Fueltype:	<b>Diesel</b>	Oil level:	<b>OK</b>
Battery functioning:	<b>Yes</b>	Parking lot:	<b>3719</b>
Number of doors:	<b>5</b>		
Number of seats:	<b>5</b>		
Number head rests:	<b>5</b>		
Rims summer:	<b>Aluminium</b>		
Category:	<b>Passenger Car</b>		
Oil level:	<b>OK</b>		

Options	
Radio CD	Sun Roof electric
Windows electric F	Central consol F
Windows electric R	Luggage cover
Cruise Control	Rear parking sensors
Steering wheel multifunctional	
Radio multimedia	
Type of headlighting	<b>Headlighting Halogen</b>
Type of GPS	<b>GPS big screen color</b>
Type of Lining	<b>Lining artificial leather</b>
Type of climate control	<b>Autom climate control</b>

Limited Technical Inspection			
Airco functioning	<b>OK</b>	Battery functioning	<b>Yes</b>
Tires wear profile	<b>OK</b>	Power steering	<b>Yes</b>
Idle position	<b>OK</b>	Sound engine	<b>OK</b>
Engine startingtime	<b>OK</b>	Clutch test	<b>OK</b>
Exhaust gass	<b>OK</b>	Wiper fluid level	<b>OK</b>
Handbrake	<b>OK</b>	Transmission	<b>OK</b>
		Lighting	<b>OK</b>
		Wiperblades	<b>OK</b>

Degree of wear				
Summer tyres:	<b>225/45/18/91 V LightMetal</b>			
	Fr.L.	<b>Pirelli: 3 mm</b>	Fr.R.	<b>Pirelli: 3 mm</b>
	Re.L.	<b>Pirelli: 3 mm</b>	Re.R.	<b>Pirelli: 3 mm</b>

Assistance equipment	
Runflat	<b>Yes</b>
Total cost ex VAT	<b>1397,91</b>
Wing R L, Scratch(es), LI - Repair and paint (complete)	<b>308,20</b>



Front bumper, Scratch(es), LI - Repair and paint (complete)	<b>211,80</b>
---	---------------



Wheel arch cover R L, Scratch(es), E - Replace	<b>64,00</b>
--	--------------



Alloy rim F R, Scratch(es), LI - Repair and paint (complete) 95,00



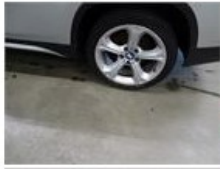
Alloy rim R R, Scratch(es), LI - Repair and paint (complete) 95,00



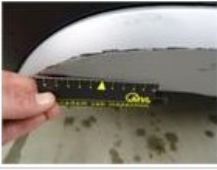
Door F R, Bump(s), Acceptable 0,00

No pictures to display

Alloy rim R L, Scratch(es), LI - Repair and paint (complete) 95,00



Spoiler R, Scratch(es), It - Spot repair 115,56



Alloy rim F L, Scratch(es), LI - Repair and paint (complete) 95,00



Door R R, Scratch(es), LI - Repair and paint (complete) 318,35

