


FORD Focus: 1GGW015

| | | | |
|------------------------------------|--------------------------|--------------|---|
| Vinnnumber: | WF0LXXGCBLEL59902 | Versionname: | FOCUS CLIP. EConetic Trend 88g 105PK |
| First Registrationdate: | 5/02/2014 | Fiscalpower: | |
| Expertise Mileage: | 70440 | Power Kw: | 77 |
| Bodytype: | Break | Body color: | Black |
| Gearbox: | MAN 6 VIT | Paint type: | Metalic |
| Transmission: | Front | Rims summer: | Steel |
| Fueltype: | Diesel | Oil level: | OK |
| Battery functioning: | Yes | Parking lot: | 1226 |
| Number of doors: | 5 | | |
| Number of seats: | 5 | | |
| Number head rests: | 5 | | |
| Rims summer: | Steel | | |
| Category: | Passenger Car | | |
| Oil level: | OK | | |
| Registration Certificate Car (BE): | Yes | | |

Options

| | |
|--------------------------------|------------------------------|
| Radio CD | Luggage cover |
| Windows electric F | Rear parking sensors |
| Windows electric R | |
| Cruise Control | |
| Steering wheel multifunctional | |
| Radio multimedia | |
| Type of headlighting | Headlighting Halogen |
| Type of GPS | GPS big screen color |
| Type of Lining | Lining fabrics |
| Type of climate control | Autom climate control |

Limited Technical Inspection

| | | | |
|---------------------|-----------|---------------------|------------|
| Airco functioning | OK | Battery functioning | Yes |
| Tires wear profile | OK | Power steering | Yes |
| Idle position | OK | Sound engine | OK |
| Engine startingtime | OK | Clutch test | OK |
| Exhaust gass | OK | Wiper fluid level | OK |
| Handbrake | OK | Transmission | OK |
| | | Lighting | OK |
| | | Wiperblades | OK |

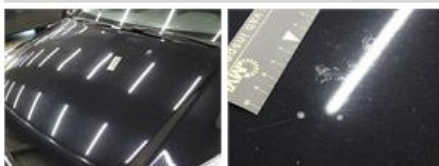
Degree of wear

| | 205/55/16/91 H Steel | | | |
|---------------|-----------------------------|-----------------------|-------|-----------------------|
| Summer tyres: | Fr.L. | Michelin: 2 mm | Fr.R. | Michelin: 2 mm |
| | Re.L. | Michelin: 3 mm | Re.R. | Michelin: 3 mm |

Assistance equipment

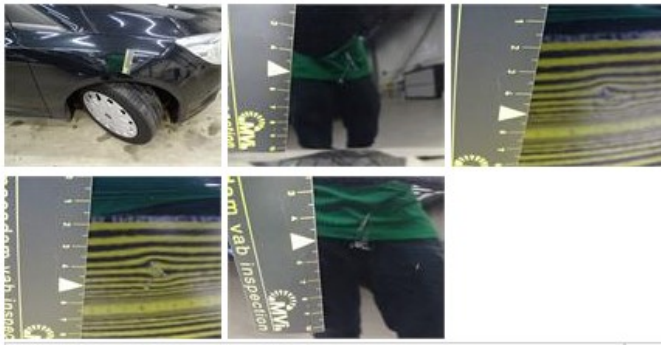
| | | | |
|-----------------------|------------|------|------------|
| Emergency spare wheel | Yes | Jack | Yes |
|-----------------------|------------|------|------------|

| | |
|---|---------|
| Total cost ex VAT | 1107,32 |
| Wheel cover F L, Scratch(es), Acceptable | 0,00 |
| <i>No pictures to display</i> | |
| Front bumper, Scratch(es), Acceptable | 0,00 |
| <i>No pictures to display</i> | |
| Rear spoiler, Chemical polution, LI - Repair and paint (complete) | 115,56 |
| <i>No pictures to display</i> | |
| Bonnet, Chemical polution, LI - Repair and paint (complete) | 290,08 |



Wing F R, Bump(s) and scratch(es), LI - Repair and paint (complete)

220,18



Roof, Chemical pollution, LI - Repair and paint (complete) 481,50



Door R R, Scratch(es), Acceptable 0,00

No pictures to display