



**FORD S Max: 1EZG585**

Vinnnumber:	<b>WF0SXXGBWSDU05530</b>	Versionname:	<b>S-MAX Econetic Titanium</b>
First Registrationdate:	<b>26/04/2013</b>	Fiscalpower:	<b>St&amp;St DPF 115PK</b>
Expertise Mileage:	<b>129715</b>	Power Kw:	<b>85</b>
Bodytype:		Body color:	<b>Black</b>
Gearbox:	<b>MAN 6 VIT</b>	Paint type:	<b>Metalic</b>
Transmission:	<b>Front</b>	Rims summer:	<b>Aluminium</b>
Fueltype:	<b>Diesel</b>	Oil level:	<b>OK</b>
Maintenance:	<b>OK</b>	Parking lot:	<b>3226</b>
Battery functioning:	<b>Yes</b>		
Number of doors:	<b>5</b>		
Number of seats:	<b>5</b>		
Number head rests:	<b>5</b>		
Rims summer:	<b>Aluminium</b>		
Category:	<b>Passenger Car</b>		
Oil level:	<b>OK</b>		

**Options**

Radio CD		Seats electric F L	
GPS storage	<b>HD</b>	Seats electric F R	
GPS storage		Panoramic roof	
Windows electric F		Central consol F	
Windows electric R		Luggage cover	
Cruise Control		Front parking sensors	
Steering wheel multifunctional		Rear parking sensors	
Type of headlighting	<b>Headlighting Halogen</b>	Type of Tow bar	<b>Tow bar removable</b>
Type of GPS	<b>GPS big screen color</b>		
Type of Lining	<b>Lining leather</b>		
Type of climate control	<b>Autom climate control</b>		

**Limited Technical Inspection**

Airco functioning	<b>OK</b>	Battery functioning	<b>Yes</b>
Tires wear profile	<b>OK</b>	Power steering	<b>Yes</b>
Idle position	<b>OK</b>	Sound engine	<b>OK</b>
Engine startingtime	<b>OK</b>	Clutch test	<b>OK</b>
Exhaust gass	<b>OK</b>	Wiper fluid level	<b>OK</b>
Handbrake	<b>OK</b>	Transmission	<b>OK</b>
		Lighting	<b>OK</b>
		Wiperblades	<b>OK</b>

**Degree of wear**

	<b>225/50/17/98 Y LightMetal</b>			
Summer tyres:	Fr.L.	<b>Michelin: 6 mm</b>	Fr.R.	<b>Michelin: 6 mm</b>
	Re.L.	<b>Michelin: 6 mm</b>	Re.R.	<b>Michelin: 6 mm</b>

**Assistance equipment**

Repair kit	<b>Yes</b>	Compressor	<b>Yes</b>
------------	------------	------------	------------

Total cost ex VAT	735,80
-------------------	--------

Door R R, Scratch(es), Acceptable	0,00
-----------------------------------	------

No pictures to display

Alloy rim F R, Scratch(es), LI - Repair and paint (complete)	95,00
--	-------





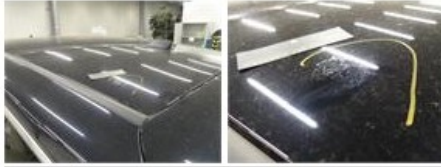
Alloy rim R R, Scratch(es), Acceptable 0,00

No pictures to display

Door R L, Scratch(es), Acceptable 0,00

No pictures to display

Roof, Chemical polution, LI - Repair and paint (complete) 577,80



Door F L, Bump(s), PDR - Knock out without painting 63,00



Alloy rim F L, Scratch(es), Acceptable 0,00

No pictures to display

Wing R R, Chemical polution, Acceptable 0,00

No pictures to display

Front bumper, Scratch(es), Acceptable 0,00

No pictures to display

Bumper R, Scratch(es), Acceptable 0,00

No pictures to display

Wing F R, Scratch(es), Acceptable 0,00

No pictures to display

Bonnet, Scratch(es), Acceptable 0,00

No pictures to display

Alloy rim R L, Scratch(es), Acceptable 0,00

No pictures to display

Windscreen, Repaired, Acceptable 0,00

No pictures to display