



## CITRO?N C4 Picasso: 1GMG304

|                                   |                          |              |                                |
|-----------------------------------|--------------------------|--------------|--------------------------------|
| Vinnumber:                        | <b>VF73A9HC8EJ578906</b> | Versionname: | <b>GR.C4 PICASSO Exclusive</b> |
| First Registrationdate:           | <b>10/03/2014</b>        | Fiscalpower: | <b>115PK</b>                   |
| Expertise Mileage:                | <b>131273</b>            | Power Kw:    | <b>85</b>                      |
| Bodytype:                         |                          | Body color   | <b>Grey</b>                    |
| Gearbox:                          | <b>MAN 6 VIT</b>         | Paint type   | <b>Metalic</b>                 |
| Transmission:                     | <b>Front</b>             | Rims summer  | <b>Aluminium</b>               |
| Fueltype:                         | <b>Diesel</b>            | Oil level    | <b>OK</b>                      |
| Maintenance                       | <b>OK</b>                | Parking lot  | <b>3327</b>                    |
| Battery functioning               | <b>Yes</b>               |              |                                |
| Number of doors                   | <b>5</b>                 |              |                                |
| Number of seats                   | <b>7</b>                 |              |                                |
| Number head rests                 | <b>7</b>                 |              |                                |
| Rims summer                       | <b>Aluminium</b>         |              |                                |
| Category                          | <b>Passenger Car</b>     |              |                                |
| Oil level                         | <b>OK</b>                |              |                                |
| Registration Certificate Car (BE) | <b>Yes</b>               |              |                                |

## Options

|                                |                              |                       |
|--------------------------------|------------------------------|-----------------------|
| GPS storage                    |                              | Central consol F      |
| GPS storage                    | <b>HD</b>                    | Luggage cover         |
| Windows electric F             |                              | Front parking sensors |
| Windows electric R             |                              | Rear parking sensors  |
| Cruise Control                 |                              |                       |
| Steering wheel multifunctional |                              |                       |
| Radio multimedia               |                              |                       |
| Type of headlighting           | <b>Headlighting Halogen</b>  |                       |
| Type of GPS                    | <b>GPS big screen color</b>  |                       |
| Type of Lining                 | <b>Lining semi-leather</b>   |                       |
| Type of climate control        | <b>Autom climate control</b> |                       |

## Limited Technical Inspection

|                     |           |                     |            |
|---------------------|-----------|---------------------|------------|
| Airco functioning   | <b>OK</b> | Battery functioning | <b>Yes</b> |
| Tires wear profile  | <b>OK</b> | Power steering      | <b>Yes</b> |
| Idle position       | <b>OK</b> | Sound engine        | <b>OK</b>  |
| Engine startingtime | <b>OK</b> | Clutch test         | <b>OK</b>  |
| Exhaust gass        | <b>OK</b> | Wiper fluid level   | <b>OK</b>  |
| Handbrake           | <b>OK</b> | Transmission        | <b>OK</b>  |
|                     |           | Lighting            | <b>OK</b>  |
|                     |           | Wiperblades         | <b>OK</b>  |

## Degree of wear

|               |                                  |                       |       |                       |
|---------------|----------------------------------|-----------------------|-------|-----------------------|
|               | <b>205/55/17/95 V LightMetal</b> |                       |       |                       |
| Summer tyres: | Fr.L.                            | <b>Michelin: 2 mm</b> | Fr.R. | <b>Michelin: 2 mm</b> |
|               | Re.L.                            | <b>Michelin: 5 mm</b> | Re.R. | <b>Michelin: 5 mm</b> |

## Assistance equipment

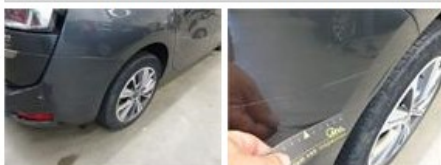
|            |            |            |            |
|------------|------------|------------|------------|
| Repair kit | <b>Yes</b> | Compressor | <b>Yes</b> |
|------------|------------|------------|------------|

|                   |         |
|-------------------|---------|
| Total cost ex VAT | 1135,00 |
|-------------------|---------|

|                                   |      |
|-----------------------------------|------|
| Door R L, Scratch(es), Acceptable | 0,00 |
|-----------------------------------|------|

No pictures to display

|   |        |
|---|--------|
| Bumper R, Scratch(es), LI - Repair and paint (complete) | 211,80 |
|---|--------|



|   |        |
|---|--------|
| Wing R L, Scratch(es), LI - Repair and paint (complete) | 308,20 |
|---|--------|



Wing R R, Scratch(es), LI - Repair and paint (complete) 308,20



Alloy rim F L polished, Scratch(es), LI - Repair and paint (complete) 95,00



Alloy rim R R polished, Scratch(es), Acceptable 0,00

No pictures to display

Front bumper, Scratch(es), LI - Repair and paint (complete) 211,80



Wing F R, Scratch(es), Acceptable 0,00

No pictures to display

Bonnet, Stone chip(s), Acceptable 0,00

No pictures to display

Floor covering F L, Hole, Acceptable 0,00

No pictures to display

Alloy rim F R polished, Scratch(es), Acceptable 0,00

No pictures to display

Door R R, Scratch(es), Acceptable 0,00

No pictures to display

Door F L, Scratch(es), Acceptable 0,00

No pictures to display

Tailgate, Scratch(es), Acceptable 0,00

No pictures to display

Door F R, Bump(s), Acceptable 0,00

No pictures to display