



**TOYOTA AYGO: CX7617**

|                                    |                        |              |                             |
|------------------------------------|------------------------|--------------|-----------------------------|
| Vinnnumber:                        | <b>JTDKGN00N186694</b> | Versionname: | <b>1.0 VVT-I X-PLAY MMT</b> |
| First Registrationdate:            | <b>22/07/2016</b>      | Fiscalpower: |                             |
| Expertise Mileage:                 | <b>49761</b>           | Power Kw:    | <b>51</b>                   |
| Bodytype:                          | <b>Hatchback</b>       | Body color:  | <b>Black</b>                |
| Gearbox:                           | <b>Automatic</b>       | Paint type:  | <b>Metalic</b>              |
| Transmission:                      | <b>Front</b>           | Rims summer: | <b>Steel</b>                |
| Fueltype:                          | <b>Petrol</b>          | Oil level:   | <b>OK</b>                   |
| Battery functioning:               | <b>Yes</b>             | Parking lot: | <b>1706</b>                 |
| Number of doors:                   | <b>5</b>               |              |                             |
| Number of seats:                   | <b>4</b>               |              |                             |
| Number head rests:                 | <b>4</b>               |              |                             |
| Rims summer:                       | <b>Steel</b>           |              |                             |
| Category:                          | <b>Passenger Car</b>   |              |                             |
| Oil level:                         | <b>OK</b>              |              |                             |
| Registration Certificate Car (BE): | <b>Yes</b>             |              |                             |

**Options**

|                                |                               |
|--------------------------------|-------------------------------|
| Windows electric F             | Luggage cover                 |
| Steering wheel multifunctional |                               |
| Radio multimedia               |                               |
| Type of headlighting           | <b>Headlighting Halogen</b>   |
| Type of GPS                    | <b>GPS big screen color</b>   |
| Type of Lining                 | <b>Lining fabrics</b>         |
| Type of climate control        | <b>Manual climate control</b> |

**Limited Technical Inspection**

|                     |           |                     |            |
|---------------------|-----------|---------------------|------------|
| Airco functioning   | <b>OK</b> | Battery functioning | <b>Yes</b> |
| Tires wear profile  | <b>OK</b> | Power steering      | <b>Yes</b> |
| Idle position       | <b>OK</b> | Sound engine        | <b>OK</b>  |
| Engine startingtime | <b>OK</b> | Clutch test         | <b>OK</b>  |
| Exhaust gass        | <b>OK</b> | Wiper fluid level   | <b>OK</b>  |
| Handbrake           | <b>OK</b> | Transmission        | <b>OK</b>  |
|                     |           | Lighting            | <b>OK</b>  |
|                     |           | Wiperblades         | <b>OK</b>  |

**Degree of wear**

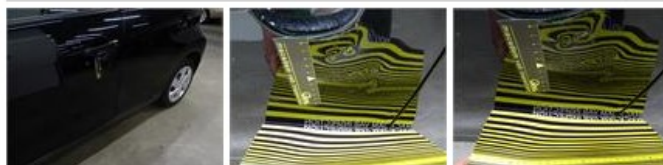
|               |                             |                          |       |                          |
|---------------|-----------------------------|--------------------------|-------|--------------------------|
|               | <b>165/60/15/77 T Steel</b> |                          |       |                          |
| Winter tyres: | Fr.L.                       | <b>Continental: 5 mm</b> | Fr.R. | <b>Continental: 5 mm</b> |
|               | Re.L.                       | <b>Continental: 6 mm</b> | Re.R. | <b>Continental: 6 mm</b> |

**Assistance equipment**

|            |            |            |            |
|------------|------------|------------|------------|
| Repair kit | <b>Yes</b> | Compressor | <b>Yes</b> |
|------------|------------|------------|------------|

Total cost ex VAT 1130,24

Door F L, Bump(s) and scratch(es), LI - Repair and paint (complete) 350,68



Front bumper, Scratch(es), LI - Repair and paint (complete) 169,44



Bumper R, Scratch(es), LI - Repair and paint (complete) 169,44



Ignition key, Missing, E - Replace 150,00

No pictures to display

Door R R, Bump(s), Acceptable 0,00

No pictures to display

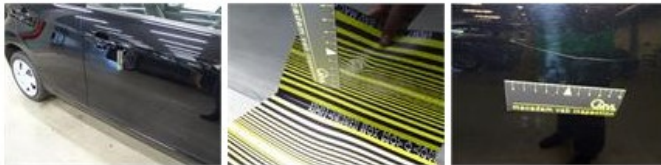
Wheel cover F R, Scratch(es), E - Replace 24,00



Aerial, Damaged, E - Replace 12,00



Door F R, Bump(s) and scratch(es), LI - Repair and paint (complete) 254,68



Roof, Scratch(es), Acceptable 0,00

No pictures to display