



**VOLKSWAGEN CADDY: 1TRA843**

Vinnumber:	<b>WV1ZZZ2KZX108585</b>	Versionname:	
First Registrationdate:	<b>1/01/2020</b>	Fiscalpower:	
Expertise Mileage:	<b>27431</b>	Power Kw:	<b>55</b>
Bodytype:	<b>Transporter</b>	Body color:	<b>White</b>
Gearbox:	<b>MAN 5 VIT</b>	Paint type:	<b>Opaque</b>
Transmission:	<b>Front</b>	Rims summer:	<b>Steel</b>
Fueltype:	<b>Diesel</b>	Oil level:	<b>OK</b>
Battery functioning:	<b>Yes</b>	Parking lot:	<b>1414</b>
Number of doors:	<b>5</b>		
Number of seats:	<b>2</b>		
Number head rests:	<b>2</b>		
Rims summer:	<b>Steel</b>		
Category:	<b>Light Commercial Vehicle</b>		
Oil level:	<b>OK</b>		
Registration Certificate Car (BE):	<b>No</b>		

**Options**

Radio CD	Type of Tow bar	<b>Tow bar fixed</b>
Windows electric F		
Type of headlighting	<b>Headlighting Halogen</b>	
Type of Lining	<b>Lining fabrics</b>	
Type of climate control	<b>Manual climate control</b>	

**Limited Technical Inspection**

Airco functioning	<b>OK</b>	Battery functioning	<b>Yes</b>
Tires wear profile	<b>OK</b>	Power steering	<b>Yes</b>
Idle position	<b>OK</b>	Sound engine	<b>OK</b>
Engine startingtime	<b>OK</b>	Clutch test	<b>OK</b>
Exhaust gass	<b>OK</b>	Wiper fluid level	<b>OK</b>
Handbrake	<b>OK</b>	Transmission	<b>OK</b>
		Lighting	<b>OK</b>
		Wiperblades	<b>OK</b>

**Degree of wear**

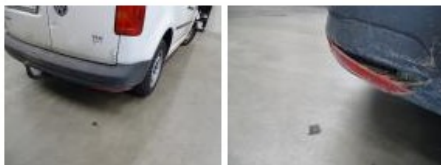
	<b>195/65/15/91 T Steel</b>			
Summer tyres:	Fr.L.	<b>Michelin: 3 mm</b>	Fr.R.	<b>Michelin: 3 mm</b>
	Re.L.	<b>Michelin: 4 mm</b>	Re.R.	<b>Michelin: 4 mm</b>

**Assistance equipment**

Spare wheel	<b>Yes</b>	Jack	<b>Yes</b>
-------------	------------	------	------------

Total cost ex VAT 1126,57

Reflector, Damaged, E - Replace 54,00



Wing R L, Bump(s) and scratch(es), LI - Repair and paint (complete) 231,15



Trunk door R L, Bump(s), Acceptable 0,00

No pictures to display

Bumper R, Damaged, E - Replace 329,40



Tailgate, Bump(s) and scratch(es), LI - Repair and paint (complete)	362,02
---	--------



Registration Document, Missing, E - Replace	150,00
---	--------

*No pictures to display*