



**RENAULT TRAFIC: YN8392**

Vinnumber:	<b>VF12FL11853810474</b>	Versionname:	<b>1.6 DCI 88KW ENERGY GD CONF LWB 2.9T</b>
First Registrationdate:	<b>27/11/2015</b>	Fiscalpower:	
Expertise Mileage:	<b>187391</b>	Power Kw:	<b>88</b>
Bodytype:		Body color:	<b>White</b>
Gearbox:	<b>MAN 6 VIT</b>	Paint type:	<b>Opaque</b>
Transmission:	<b>Front</b>	Rims summer:	<b>Steel</b>
Fueltype:	<b>Diesel</b>	Oil level:	<b>OK</b>
Maintenance:	<b>OK</b>	Parking lot:	<b>3731</b>
Maintenance:	<b>15600KM OF 20 MND</b>		
Battery functioning:	<b>Yes</b>		
Number of doors:	<b>5</b>		
Number of seats:	<b>3</b>		
Number head rests:	<b>3</b>		
Rims summer:	<b>Steel</b>		
Category:	<b>Light Commercial Vehicle</b>		
Oil level:	<b>OK</b>		
Registration Certificate Car (BE):	<b>Yes</b>		

**Options**

Windows electric F		Central consol F	
Type of headlighting:	<b>Headlighting Halogen</b>	Rear parking sensors	
Type of Lining:	<b>Lining fabrics</b>		
Type of climate control:	<b>Manual climate control</b>		

**Limited Technical Inspection**

Airco functioning	<b>OK</b>	Battery functioning	<b>Yes</b>
Tires wear profile	<b>OK</b>	Power steering	<b>Yes</b>
Idle position	<b>OK</b>	Sound engine	<b>OK</b>
Engine startingtime	<b>OK</b>	Clutch test	<b>OK</b>
Exhaust gass	<b>OK</b>	Wiper fluid level	<b>OK</b>
Handbrake	<b>OK</b>	Transmission	<b>OK</b>
		Lighting	<b>OK</b>
		Wiperblades	<b>OK</b>

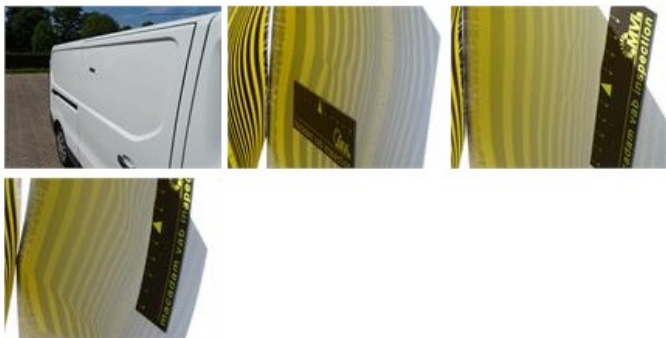
**Degree of wear**

	<b>205/55/16/107 T Steel</b>			
Summer tyres:	Fr.L.	<b>Goodyear: 4 mm</b>	Fr.R.	<b>Goodyear: 4 mm</b>
	Re.L.	<b>Goodyear: 5 mm</b>	Re.R.	<b>Goodyear: 5 mm</b>

**Assistance equipment**

Spare wheel	<b>Yes</b>	Jack	<b>Yes</b>
-------------	------------	------	------------

Total cost ex VAT	1502,04
Sliding door R, Bump(s), LI - Repair and paint (complete)	382,02



Sidewall FL (LCV), Bump(s), PDR - Knock out without painting	63,00
--	-------



Roof, Bump(s) and scratch(es), LI - Repair and paint (complete) 361,13



Door moulding Lower R R, Scratch(es), Acceptable 0,00



Central pillar R, Bump(s), LI - Repair and paint (complete) 366,49



Bumper R, Scratch(es), E - Replace 329,40



Front bumper, Scratch(es), Acceptable 0,00



Bonnet, Bump(s), Acceptable 0,00

