



**TOYOTA Prius: 959BVC**

Vinnnumber:	<b>JTDKN36U905116533</b>	Versionname:	<b>PRIUS Hybrid Luna 98PK Aut.</b>
First Registrationdate:	<b>2/07/2010</b>	Fiscalpower:	
Expertise Mileage:	<b>54702</b>	Power Kw:	<b>72</b>
Bodytype:		Body color:	<b>Silver</b>
Gearbox:	<b>Automatic</b>	Paint type:	<b>Metalic</b>
Transmission:	<b>Front</b>	Rims summer:	<b>Aluminium</b>
Fueltype:	<b>Hybrid Petrol</b>	Oil level:	<b>OK</b>
Maintenance:	<b>OK</b>	Parking lot:	<b>3514</b>
Battery functioning:	<b>Yes</b>		
Number of doors:	<b>5</b>		
Number of seats:	<b>5</b>		
Number head rests:	<b>5</b>		
Rims summer:	<b>Aluminium</b>		
Category:	<b>Passenger Car</b>		
Oil level:	<b>OK</b>		

**Options**

Radio CD	Central consol F
Windows electric F	Luggage cover
Windows electric R	Rear parking sensors
Cruise Control	
Steering wheel multifunctional	
Type of headlighting:	<b>Headlighting Halogen</b>
Type of Lining:	<b>Lining leather</b>
Type of climate control:	<b>Manual climate control</b>

**Limited Technical Inspection**

Airco functioning	<b>OK</b>	Battery functioning	<b>Yes</b>
Tires wear profile	<b>OK</b>	Power steering	<b>Yes</b>
Idle position	<b>OK</b>	Sound engine	<b>OK</b>
Engine startingtime	<b>OK</b>	Clutch test	<b>OK</b>
Exhaust gass	<b>OK</b>	Wiper fluid level	<b>OK</b>
Handbrake	<b>OK</b>	Transmission	<b>OK</b>
		Lighting	<b>OK</b>
		Wiperblades	<b>OK</b>

**Degree of wear**

	<b>215/45/17/87 W LightMetal</b>			
Summer tyres:	Fr.L.	<b>Michelin: 7 mm</b>	Fr.R.	<b>Michelin: 7 mm</b>
	Re.L.	<b>Michelin: 8 mm</b>	Re.R.	<b>Michelin: 8 mm</b>

**Assistance equipment**

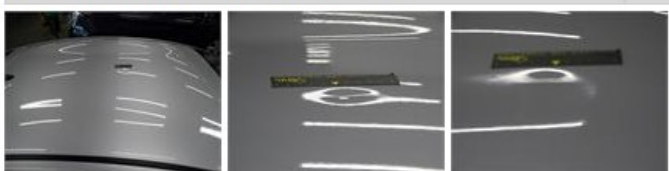
Emergency spare wheel	<b>Yes</b>	Jack	<b>Yes</b>
-----------------------	------------	------	------------

Total cost ex VAT 508,16

Bumper R, Bump(s) and scratch(es), LI - Repair and paint (complete) 211,80



Roof, Bump(s), PDR - Knock out without painting 130,80

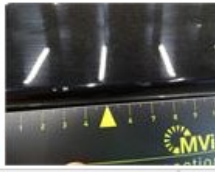




Front bumper, Scratch(es), Acceptable 0,00

*No pictures to display*

Rear spoiler, Scratch(es), LI - Repair and paint (complete) 115,56



Alloy rim R L, Damaged, LI - Repair and paint (partial) 50,00



Alloy rim F R, Scratch(es), Acceptable 0,00

*No pictures to display*