



## VOLKSWAGEN Golf: 1GPP904

Vinnnumber:	<b>WVWZZZAUZEP572028</b>	Versionname:	<b>GOLF VAR Trendline 105PK</b>
First Registrationdate:	<b>26/03/2014</b>	Fiscalpower:	
Expertise Mileage:	<b>195079</b>	Power Kw:	<b>77</b>
Bodytype:	<b>Break</b>	Body color:	<b>White</b>
Gearbox:	<b>MAN 5 VIT</b>	Paint type:	<b>Opaque</b>
Transmission:	<b>Front</b>	Rims summer:	<b>Steel</b>
Fueltype:	<b>Diesel</b>	Oil level:	<b>OK</b>
Battery functioning:	<b>Yes</b>	Parking lot:	<b>4606</b>
Number of doors:	<b>5</b>		
Number of seats:	<b>5</b>		
Number head rests:	<b>5</b>		
Rims summer:	<b>Steel</b>		
Category:	<b>Passenger Car</b>		
Oil level:	<b>OK</b>		
Registration Certificate Car (BE):	<b>Yes</b>		

## Options

Radio CD		Central consol F
GPS storage	<b>SD</b>	Luggage cover
GPS storage		
Windows electric F		
Windows electric R		
Cruise Control		
Steering wheel multifunctional		
Type of headlighting	<b>Headlighting Halogen</b>	
Type of GPS	<b>GPS big screen color</b>	
Type of Lining	<b>Lining fabrics</b>	
Type of climate control	<b>Autom climate control</b>	

## Limited Technical Inspection

Airco functioning	<b>OK</b>	Battery functioning	<b>Yes</b>
Tires wear profile	<b>OK</b>	Power steering	<b>Yes</b>
Idle position	<b>OK</b>	Sound engine	<b>OK</b>
Engine startingtime	<b>OK</b>	Clutch test	<b>OK</b>
Exhaust gass	<b>OK</b>	Wiper fluid level	<b>OK</b>
Handbrake	<b>OK</b>	Transmission	<b>OK</b>
		Lighting	<b>OK</b>
		Wiperblades	<b>OK</b>

## Degree of wear

195/65/15/91 H Steel				
Summer tyres:	Fr.L.	Michelin: 3 mm	Fr.R.	Michelin: 3 mm
	Re.L.	Michelin: 4 mm	Re.R.	Michelin: 4 mm

## Assistance equipment

Emergency spare wheel	<b>Yes</b>	Jack	<b>Yes</b>
-----------------------	------------	------	------------

Total cost ex VAT	501,88
-------------------	--------

Bumper R, Scratch(es), Acceptable	0,00
-----------------------------------	------

*No pictures to display*

Front bumper, Scratch(es), LI - Repair and paint (complete)	211,80
---	--------





Bodywork, Not original part, Remove lettering	0,00
---	------

*No pictures to display*

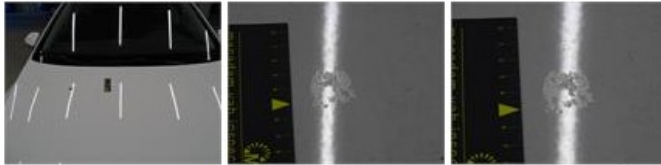
Wheel cover R R, Scratch(es), Acceptable	0,00
--	------

*No pictures to display*

Trunk lid covering R, Scratch(es), Acceptable	0,00
---	------

*No pictures to display*

Bonnet, Chemical pollution, LI - Repair and paint (complete)	290,08
--	--------



Interior, Dirty, Acceptable	0,00
-----------------------------	------

*No pictures to display*