



BMW X4: 1NDG183			
Vinnumber:	WBAXX110700L98268	Versionname:	2.0 XDRIVE20D (140KW)
First Registrationdate:	27/01/2016	Fiscalpower:	4WD
Expertise Mileage:	99742	Power Kw:	140
Bodytype:	SUV	Body color:	Dark Grey
Gearbox:	Automatic	Paint type:	Metalic
Transmission:		Rims summer:	Aluminium
Fueltype:	Diesel	Oil level:	OK
Battery functioning:	Yes	Parking lot:	4508
Number of doors:	5		
Number of seats:	5		
Number head rests:	5		
Rims summer:	Aluminium		
Category:	Passenger Car		
Oil level:	OK		
Registration Certificate Car (BE):	Yes		

Options	
Radio CD	Central consol F
Windows electric F	Luggage cover
Windows electric R	Front parking sensors
Cruise Control	Rear parking sensors
Steering wheel multifunctional	
Seats F heated	
Radio multimedia	
Type of headlighting:	Headlighting LED
Type of GPS:	GPS big screen color
Type of Lining:	Lining leather
Type of climate control:	Autom climate control
Head-up Display	

Limited Technical Inspection			
Airco functioning	OK	Battery functioning	Yes
Tires wear profile	OK	Power steering	Yes
Idle position	OK	Sound engine	OK
Engine startingtime	OK	Clutch test	OK
Exhaust gass	OK	Wiper fluid level	OK
Handbrake	OK	Transmission	OK
		Lighting	OK
		Wiperblades	OK

Degree of wear				
	245/45/19/98 W LightMetal			
Summer tyres:	Fr.L.	Continental: 7 mm	Fr.R.	Continental: 7 mm
	Re.L.	Continental: 7 mm	Re.R.	Continental: 7 mm

Assistance equipment	
Runflat	Yes

Total cost ex VAT	1174,95
Alloy rim F R polished, Scratch(es), LI - Repair and paint (complete)	95,00



Alloy rim F L polished, Scratch(es), Acceptable 0,00

No pictures to display

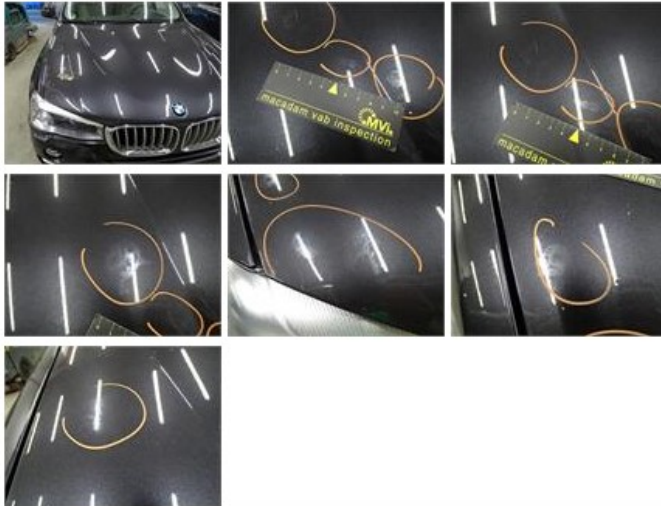
Tailgate, Bump(s) and scratch(es), LI - Repair and paint (complete) 362,02



Alloy rim R R polished, Scratch(es), Acceptable 0,00

No pictures to display

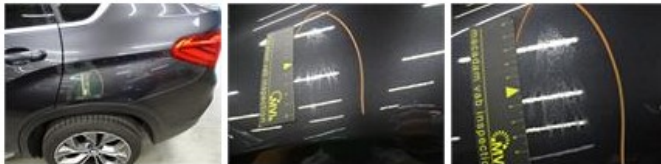
Bonnet, Chemical polution, LI - Repair and paint (complete) 348,09



Bumper R, Scratch(es), Acceptable 0,00

No pictures to display

Wing R L, Chemical polution, LI - Repair and paint (complete) 369,84



Alloy rim R L polished, Scratch(es), Acceptable 0,00

No pictures to display