


BMW 5 TOURING: 1LNS035

Vinnumber:	WBA5L11060G323202	Versionname:	2.0 518D (100KW) TOURING
First Registrationdate:	29/10/2015	Fiscalpower:	
Expertise Mileage:	122573	Power Kw:	100
Bodytype:	Break	Body color:	Anthracite
Gearbox:	Automatic	Paint type:	Metalic
Transmission:	Back	Rims summer:	Aluminium
Fueltype:	Diesel	Oil level:	OK
Battery functioning:	Yes	Parking lot:	2331
Number of doors:	5		
Number of seats:	5		
Number head rests:	5		
Rims summer:	Aluminium		
Category:	Passenger Car		
Oil level:	OK		
Registration Certificate Car (BE):	Yes		

Options

Radio CD		Seats electric F L	
Windows electric F		Seats electric F R	
Windows electric R		Central consol F	
Cruise Control		Luggage cover	
Steering wheel multifunctional		Front parking sensors	
Seats F heated		Rear parking sensors	
Radio multimedia			
Type of headlighting:	Headlighting Xenon		
Type of GPS:	GPS big screen color		
Type of Lining:	Lining leather		
Type of climate control:	Autom climate control		

Limited Technical Inspection

Airco functioning	OK	Battery functioning	Yes
Tires wear profile	OK	Power steering	Yes
Idle position	OK	Sound engine	OK
Engine startingtime	OK	Clutch test	OK
Exhaust gass	OK	Wiper fluid level	OK
Handbrake	OK	Transmission	OK
		Lighting	OK
		Wiperblades	OK

Degree of wear

	225/55/17/97 Y LightMetal			
Summer tyres:	Fr.L.	Michelin: 3 mm	Fr.R.	Michelin: 3 mm
	Re.L.	Michelin: 5 mm	Re.R.	Michelin: 5 mm

Assistance equipment

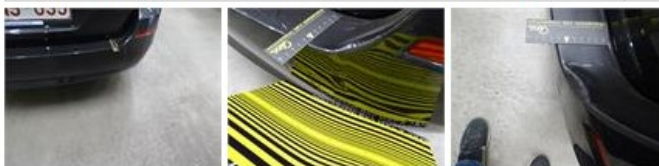
Repair kit	Yes	Compressor	Yes
------------	------------	------------	------------

Total cost ex VAT	880,92
-------------------	---------------

Alloy rim F R, Scratch(es), Acceptable	0,00
--	-------------

No pictures to display

Bumper R, Bump(s) and scratch(es), LI - Repair and paint (complete)	254,16
---	---------------



Front bumper, Scratch(es), LI - Repair and paint (complete)	254,16
---	---------------



Sill outer L, Scratch(es), LI - Repair and paint (complete)	372,60
---	--------



Wing F R, Scratch(es), Acceptable	0,00
-----------------------------------	------

No pictures to display