


SKODA Octavia: 1HBF324

| | | | |
|------------------------------------|--------------------------|--------------|-------------------------------|
| Vinnumber: | TMBJG7NE3F0009068 | Versionname: | OCTAVIA COMBI Ambition |
| First Registrationdate: | 10/06/2014 | Fiscalpower: | 105PK |
| Expertise Mileage: | 116753 | Power Kw: | 77 |
| Bodytype: | | Body color: | Black |
| Gearbox: | MAN 5 VIT | Paint type: | Metalic |
| Transmission: | Front | Rims summer: | Aluminium |
| Fueltype: | Diesel | Oil level: | OK |
| Maintenance: | OK | Parking lot: | 3607 |
| Battery functioning: | Yes | | |
| Number of doors: | 5 | | |
| Number of seats: | 5 | | |
| Number head rests: | 5 | | |
| Rims summer: | Aluminium | | |
| Category: | Passenger Car | | |
| Oil level: | OK | | |
| Registration Certificate Car (BE): | Yes | | |

Options

| | | | |
|--------------------------------|------------------------------|-----------------------|--------------------------|
| GPS storage | SD | Central consol F | |
| GPS storage | | Luggage cover | |
| Windows electric F | | Front parking sensors | |
| Windows electric R | | Rear parking sensors | |
| Cruise Control | | Type of Tow bar | Tow bar removable |
| Steering wheel multifunctional | | | |
| Seats F heated | | | |
| Type of headlighting | Headlighting Halogen | | |
| Type of GPS | GPS big screen color | | |
| Type of Lining | Lining fabrics | | |
| Type of climate control | Autom climate control | | |

Limited Technical Inspection

| | | | |
|---------------------|-----------|---------------------|------------|
| Airco functioning | OK | Battery functioning | Yes |
| Tires wear profile | OK | Power steering | Yes |
| Idle position | OK | Sound engine | OK |
| Engine startingtime | OK | Clutch test | OK |
| Exhaust gass | OK | Wiper fluid level | OK |
| Handbrake | OK | Transmission | OK |
| | | Lighting | OK |
| | | Wiperblades | OK |

Degree of wear

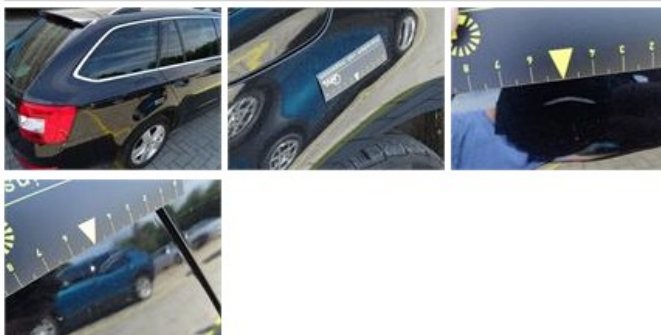
| | | | | |
|---------------|----------------------------------|--------------------------|-------|--------------------------|
| | 205/55/16/91 V LightMetal | | | |
| Summer tyres: | Fr.L. | Semperit: 8 mm | Fr.R. | Semperit: 8 mm |
| | Re.L. | Continental: 5 mm | Re.R. | Continental: 5 mm |

Assistance equipment

| | | | |
|-------------|------------|------|------------|
| Spare wheel | Yes | Jack | Yes |
|-------------|------------|------|------------|

| | |
|-------------------|----------------|
| Total cost ex VAT | 1319,85 |
|-------------------|----------------|

| | |
|---------------------------------------------------------------------|---------------|
| Wing R R, Bump(s) and scratch(es), LI - Repair and paint (complete) | 308,20 |
|---------------------------------------------------------------------|---------------|



Door F R, Scratch(es), Acceptable 0,00

No pictures to display

Bumper R, Bump(s) and scratch(es), LI - Repair and paint (complete) 211,80



Door R L, Scratch(es), LI - Repair and paint (complete) 318,35



Roof, Scratch(es), LI - Repair and paint (complete) 481,50



Rearview mirror housing R, Scratch(es), Acceptable 0,00

No pictures to display