



**VOLVO V60: 1GQI761**

Vinnnumber:	<b>YV1FW8481E1204692</b>	Versionname:	<b>V60 BRE D2 Kinetic 115PK</b>
First Registrationdate:	<b>1/04/2014</b>	Fiscalpower:	
Expertise Mileage:	<b>163440</b>	Power Kw:	<b>84</b>
Bodytype:	<b>Break</b>	Body color:	<b>Black</b>
Gearbox:	<b>MAN 6 VIT</b>	Paint type:	<b>Metalic</b>
Transmission:	<b>Front</b>	Rims summer:	<b>Aluminium</b>
Fueltype:	<b>Diesel</b>	Oil level:	<b>OK</b>
Battery functioning:	<b>Yes</b>	Parking lot:	<b>4127</b>
Number of doors:	<b>5</b>		
Number of seats:	<b>5</b>		
Number head rests:	<b>5</b>		
Rims summer:	<b>Aluminium</b>		
Category:	<b>Passenger Car</b>		
Oil level:	<b>OK</b>		
Registration Certificate Car (BE):	<b>Yes</b>		

**Options**

Radio CD		Central consol F
GPS storage	<b>HD</b>	Luggage cover
GPS storage		Rear parking sensors
Windows electric F		
Windows electric R		
Cruise Control		
Steering wheel multifunctional		
Seats F heated		
Type of headlighting	<b>Headlighting Halogen</b>	
Type of GPS	<b>GPS big screen color</b>	
Type of Lining	<b>Lining fabrics</b>	
Type of climate control	<b>Autom climate control</b>	

**Limited Technical Inspection**

Airco functioning	<b>OK</b>	Battery functioning	<b>Yes</b>
Tires wear profile	<b>OK</b>	Power steering	<b>Yes</b>
Idle position	<b>OK</b>	Sound engine	<b>OK</b>
Engine startingtime	<b>OK</b>	Clutch test	<b>OK</b>
Exhaust gass	<b>OK</b>	Wiper fluid level	<b>OK</b>
Handbrake	<b>OK</b>	Transmission	<b>OK</b>
		Lighting	<b>OK</b>
		Wiperblades	<b>OK</b>

**Degree of wear**

	<b>205/60/16/96 H LightMetal</b>			
Winter tyres:	Fr.L.	<b>Michelin: 3 mm</b>	Fr.R.	<b>Michelin: 3 mm</b>
	Re.L.	<b>Michelin: 3 mm</b>	Re.R.	<b>Michelin: 3 mm</b>

**Assistance equipment**

Repair kit	<b>Yes</b>	Compressor	<b>Yes</b>
------------	------------	------------	------------

Total cost ex VAT	<b>1760,41</b>
-------------------	----------------

Alloy rim R R, Scratch(es), LI - Repair and paint (complete)	<b>95,00</b>
--	--------------



Alloy rim R L, Scratch(es), LI - Repair and paint (complete) 95,00



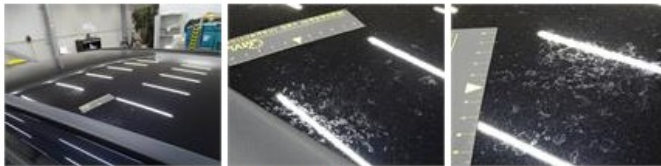
Wing F L, Bump(s), PDR - Knock out without painting 63,00



Interior, Stain, Acceptable 0,00

No pictures to display

Roof, Chemical pollution, LI - Repair and paint (complete) 481,50



Wing R R, Bump(s) and scratch(es), LI - Repair and paint (complete) 380,20



Bumper R, Scratch(es), Acceptable 0,00

No pictures to display

Door R R, Scratch(es), LI - Repair and paint (complete) 318,35



Sill outer R, Scratch(es), It - Spot repair 115,56



Front bumper, Scratch(es), LI - Repair and paint (complete) 211,80



Windscreen, Stone chip(s), Acceptable 0,00

No pictures to display

Door R L, Scratch(es), Acceptable 0,00

No pictures to display

Alloy rim F L, Scratch(es), Acceptable 0,00

No pictures to display

Alloy rim F R, Scratch(es), Acceptable 0,00

No pictures to display