



VOLVO V40: 1GUR683

Vinnnumber:	YV1MV8481E2153498	Versionname:	V40 D2 Base 115PK
First Registrationdate:	6/05/2014	Fiscalpower:	
Expertise Mileage:	174829	Power Kw:	84
Bodytype:		Body color:	Dark Blue
Gearbox:	MAN 6 VIT	Paint type:	Metalic
Transmission:		Rims summer:	Aluminium
Fueltype:	Diesel	Oil level:	OK
Battery functioning:	Yes	Parking lot:	2223
Number of doors:	5		
Number of seats:	5		
Number head rests:	5		
Rims summer:	Aluminium		
Category:	Passenger Car		
Oil level:	OK		
Registration Certificate Car (BE):	Yes		

Options

Radio CD	Central consol F
Windows electric F	Luggage cover
Windows electric R	Rear parking sensors
Cruise Control	
Steering wheel multifunctional	
Radio multimedia	
Type of headlighting	Headlighting Halogen
Type of GPS	GPS big screen color
Type of Lining	Lining fabrics
Type of climate control	Manual climate control

Limited Technical Inspection

Airco functioning	OK	Battery functioning	Yes
Tires wear profile	OK	Power steering	Yes
Idle position	OK	Sound engine	OK
Engine startingtime	OK	Clutch test	OK
Exhaust gass	OK	Wiper fluid level	OK
Handbrake	OK	Transmission	OK
		Lighting	OK
		Wiperblades	OK

Degree of wear

	205/55/16/91 H LightMetal			
Summer tyres:	Fr.L.	Michelin: 5 mm	Fr.R.	Michelin: 5 mm
	Re.L.	Michelin: 6 mm	Re.R.	Michelin: 6 mm

Assistance equipment

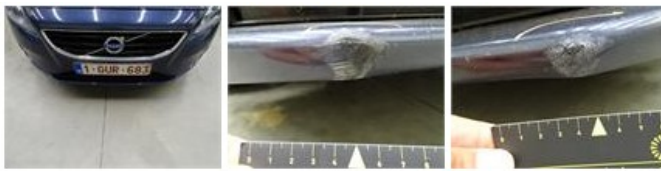
Emergency spare wheel	Yes	Jack	Yes
-----------------------	------------	------	------------

Total cost ex VAT	625,15
Alloy rim R R, Scratch(es), LI - Repair and paint (complete)	95,00



Front bumper, Scratch(es), LI - Repair and paint (complete)

211,80



Alloy rim F R, Scratch(es), Acceptable 0,00

No pictures to display

Door R L, Bump(s) and scratch(es), LI - Repair and paint (complete) 318,35



Rear window, Scratch(es), E - Replace 0,00

