


**BMW 5 TOURING: 1KGR612**

Vinnumber:	<b>WBA5L11000D969319</b>	Versionname:	<b>2.0 518D (100KW) TOURING</b>
First Registrationdate:	<b>29/04/2015</b>	Fiscalpower:	
Expertise Mileage:	<b>59781</b>	Power Kw:	<b>100</b>
Bodytype:	<b>Break</b>	Body color:	<b>Dark Brown</b>
Gearbox:	<b>Automatic</b>	Paint type:	<b>Metalic</b>
Transmission:	<b>Back</b>	Rims summer:	<b>Aluminium</b>
Fueltype:	<b>Diesel</b>	Oil level:	<b>OK</b>
Battery functioning:	<b>Yes</b>	Parking lot:	<b>2626</b>
Number of doors:	<b>5</b>		
Number of seats:	<b>5</b>		
Number head rests:	<b>5</b>		
Rims summer:	<b>Aluminium</b>		
Category:	<b>Passenger Car</b>		
Oil level:	<b>OK</b>		
Registration Certificate Car (BE):	<b>Yes</b>		

**Options**

Radio CD	Sun Roof electric
Windows electric F	Central consol F
Windows electric R	Luggage cover
Cruise Control	Front parking sensors
Steering wheel multifunctional	Rear parking sensors
Seats F heated	
Radio multimedia	
Type of headlighting:	<b>Headlighting Xenon</b>
Type of GPS:	<b>GPS big screen color</b>
Type of Lining:	<b>Lining leather</b>
Type of climate control:	<b>Autom climate control</b>

**Limited Technical Inspection**

Airco functioning	<b>OK</b>	Battery functioning	<b>Yes</b>
Tires wear profile	<b>OK</b>	Power steering	<b>Yes</b>
Idle position	<b>OK</b>	Sound engine	<b>OK</b>
Engine startingtime	<b>OK</b>	Clutch test	<b>OK</b>
Exhaust gass	<b>OK</b>	Wiper fluid level	<b>OK</b>
Handbrake	<b>OK</b>	Transmission	<b>OK</b>
		Lighting	<b>OK</b>
		Wiperblades	<b>OK</b>

**Degree of wear**

	<b>225/55/17/97 V LightMetal</b>			
Summer tyres:	Fr.L.	<b>Michelin: 3 mm</b>	Fr.R.	<b>Michelin: 3 mm</b>
	Re.L.	<b>Michelin: 6 mm</b>	Re.R.	<b>Michelin: 6 mm</b>

**Assistance equipment**

Repair kit	<b>Yes</b>	Compressor	<b>Yes</b>
------------	------------	------------	------------

Total cost ex VAT	925,89
-------------------	--------

Roof, Chemical polution, LI - Repair and paint (complete)	577,80
---	--------



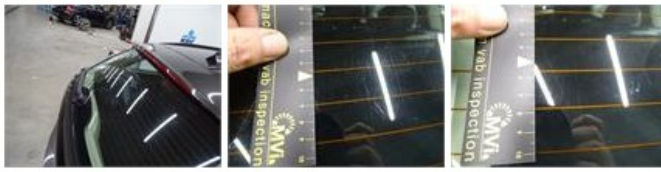
Bumper R, Scratch(es), Acceptable	0,00
-----------------------------------	------

No pictures to display

Door F R, Bad repair, Acceptable	0,00
----------------------------------	------



Rear window, Scratch(es), E - Replace 0,00



Bonnet, Chemical polution, LI - Repair and paint (complete) 348,09



Wing R R, Bad repair, Acceptable 0,00



Wing F R, Scratch(es), Acceptable 0,00

No pictures to display