



BMW 5: 1DPM987

Vinnumber:	WBAMX11080DY02741	Versionname:	5 TOURING 520dA Start/Stop 163PK aut
First Registrationdate:	16/07/2012	Fiscalpower:	
Expertise Mileage:	156018	Power Kw:	120
Bodytype:		Body color:	Black
Gearbox:	Automatic	Paint type:	Metalic
Transmission:	Back	Rims summer:	Aluminium
Fueltype:	Diesel	Oil level:	OK
Battery functioning:	Yes	Parking lot:	4105
Number of doors:	5		
Number of seats:	5		
Number head rests:	5		
Rims summer:	Aluminium		
Category:	Passenger Car		
Oil level:	OK		

Options

Radio CD		Central consol F
GPS storage		Luggage cover
GPS storage	HD	Front parking sensors
Windows electric F		Rear parking sensors
Windows electric R		
Cruise Control		
Steering wheel multifunctional		
Type of headlighting	Headlighting Halogen	
Type of GPS	GPS big screen color	
Type of Lining	Lining leather	
Type of climate control	Autom climate control	

Limited Technical Inspection

Airco functioning	OK	Battery functioning	Yes
Tires wear profile	OK	Power steering	Yes
Idle position	OK	Sound engine	OK
Engine startingtime	OK	Clutch test	OK
Exhaust gass	OK	Wiper fluid level	OK
Handbrake	OK	Transmission	OK
		Lighting	OK
		Wiperblades	OK

Degree of wear

	225/55/17/97 W LightMetal			
Summer tyres:	Fr.L.	Continental: 5 mm	Fr.R.	Continental: 5 mm
	Re.L.	Continental: 4 mm	Re.R.	Continental: 4 mm

Assistance equipment

Repair kit	Yes	Compressor	Yes
------------	------------	------------	------------

Total cost ex VAT 1678,34

Rearview mirror housing L, Scratch(es), Acceptable 0,00

No pictures to display

Front bumper, Scratch(es), LI - Repair and paint (complete) 254,16





Alloy rim F R, Scratch(es), LI - Repair and paint (complete) 95,00



Alloy rim F L, Scratch(es), LI - Repair and paint (complete) 95,00



Seat cover F L, Tear, E - Replace 408,00



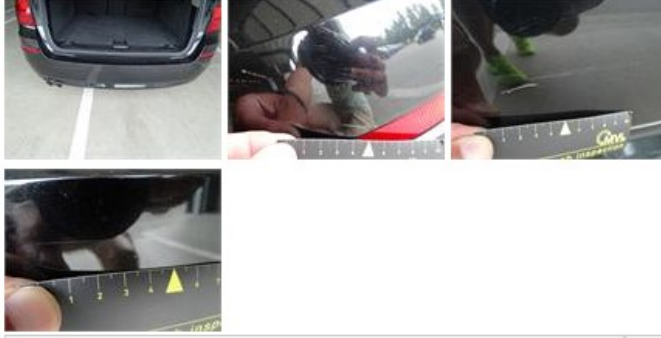
Tailgate, Scratch(es), Acceptable 0,00

No pictures to display

Door R L, Bump(s) and scratch(es), LI - Repair and paint (complete) 382,02



Bumper R, Scratch(es), LI - Repair and paint (complete) 254,16



Alloy rim R R, Scratch(es), LI - Repair and paint (complete) 95,00



Door R R, Scratch(es), Acceptable 0,00

No pictures to display

Alloy rim R L, Scratch(es), LI - Repair and paint (complete) 95,00



