



PEUGEOT 208: 1EMW237			
Vinnumber:	VF3CC8HR0CT124998	Versionname:	208 BER Active 68PK
First Registrationdate:	25/01/2013	Fiscalpower:	
Expertise Mileage:	163846	Power Kw:	50
Bodytype:	Hatchback	Body color:	Grey
Gearbox:	MAN 5 VIT	Paint type:	Metalic
Transmission:		Rims summer:	Steel
Fueltype:	Diesel	Oil level:	OK
Battery functioning:	Yes	Parking lot:	4811
Number of doors:	5		
Number of seats:	5		
Number head rests:	5		
Rims summer:	Steel		
Category:	Passenger Car		
Oil level:	OK		

Options	
Windows electric F	Luggage cover
Cruise Control	
Steering wheel multifunctional	
Type of headlighting	Headlighting Halogen
Type of Lining	Lining fabrics
Type of climate control	Manual climate control

Limited Technical Inspection			
Airco functioning	OK	Battery functioning	Yes
Tires wear profile	OK	Power steering	Yes
Idle position	OK	Sound engine	OK
Engine startingtime	OK	Clutch test	OK
Exhaust gass	OK	Wiper fluid level	OK
Handbrake	OK	Transmission	OK
		Lighting	OK
		Wiperblades	OK

Degree of wear				
	185/65/15/88 T Steel			
Summer tyres:	Fr.L.	Semperit: 7 mm	Fr.R.	Semperit: 7 mm
	Re.L.	Semperit: 6 mm	Re.R.	Semperit: 6 mm

Assistance equipment			
Spare wheel	Yes	Jack	Yes

Total cost ex VAT	549,24
Bumper R, Scratch(es), Acceptable	0,00

No pictures to display	
Wheel cover R R, Damaged, E - Replace	24,00



Wheel cover F R, Damaged, E - Replace	24,00
---------------------------------------	--------------



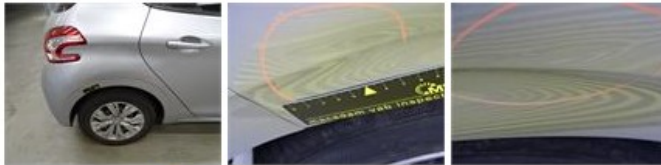
Wheel cover F L, Scratch(es), Acceptable 0,00

No pictures to display

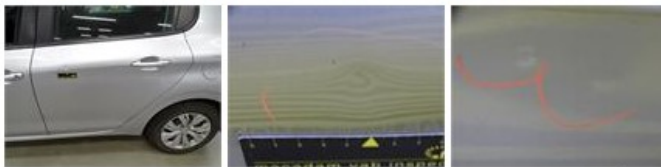
Front bumper, Scratch(es), Acceptable 0,00

No pictures to display

Wing R R, Bump(s) and scratch(es), LI - Repair and paint (complete) 246,56



Door R L, Bump(s) and scratch(es), LI - Repair and paint (complete) 254,68



Wing F L, Scratch(es), Acceptable 0,00

No pictures to display