



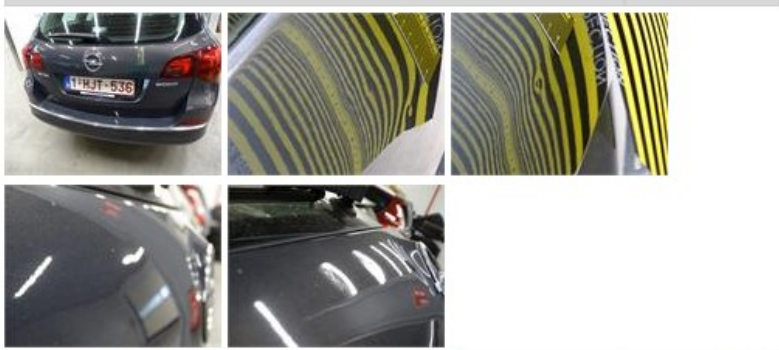
OPEL Astra: 1HJT536			
Vinnnumber:	<b>WOLPE8E6XE8069815</b>	Versionname:	<b>ASTRA BRE ecoFLEX Cosmo St/St 110PK</b>
First Registrationdate:	<b>4/08/2014</b>	Fiscalpower:	
Expertise Mileage:	<b>120669</b>	Power Kw:	<b>81</b>
Bodytype:	<b>Break</b>	Body color:	<b>Grey</b>
Gearbox:	<b>MAN 6 VIT</b>	Paint type:	<b>Metalic</b>
Transmission:	<b>Front</b>	Rims summer:	<b>Aluminium</b>
Fueltype:	<b>Diesel</b>	Oil level:	<b>OK</b>
Battery functioning:	<b>Yes</b>	Parking lot:	<b>2708</b>
Number of doors:	<b>5</b>		
Number of seats:	<b>5</b>		
Number head rests:	<b>5</b>		
Rims summer:	<b>Aluminium</b>		
Category:	<b>Passenger Car</b>		
Oil level:	<b>OK</b>		
Registration Certificate Car (BE):	<b>Yes</b>		

Options	
Radio CD	Central consol F
Windows electric F	Luggage cover
Windows electric R	Front parking sensors
Cruise Control	Rear parking sensors
Steering wheel multifunctional	
Radio multimedia	
Type of headlighting:	<b>Headlighting Halogen</b>
Type of GPS:	<b>GPS big screen color</b>
Type of Lining:	<b>Lining semi-artificial leather</b>
Type of climate control:	<b>Autom climate control</b>

Limited Technical Inspection			
Airco functioning	<b>OK</b>	Battery functioning	<b>Yes</b>
Tires wear profile	<b>OK</b>	Power steering	<b>Yes</b>
Idle position	<b>OK</b>	Sound engine	<b>OK</b>
Engine startingtime	<b>OK</b>	Clutch test	<b>OK</b>
Exhaust gass	<b>OK</b>	Wiper fluid level	<b>OK</b>
Handbrake	<b>OK</b>	Transmission	<b>OK</b>
		Lighting	<b>OK</b>
		Wiperblades	<b>OK</b>

Degree of wear				
	<b>225/50/17/94 V LightMetal</b>			
Summer tyres:	Fr.L.	<b>Continental: 4 mm</b>	Fr.R.	<b>Continental: 4 mm</b>
	Re.L.	<b>Continental: 5 mm</b>	Re.R.	<b>Continental: 5 mm</b>

Assistance equipment			
Repair kit	<b>Yes</b>	Compressor	<b>Yes</b>
Total cost ex VAT			1967,79
Tailgate, Bump(s) and scratch(es), LI - Repair and paint (complete)			301,68



Roof, Chemical pollution, LI - Repair and paint (complete)	481,50
--	--------



Front bumper, Difference in color, Acceptable 0,00

No pictures to display

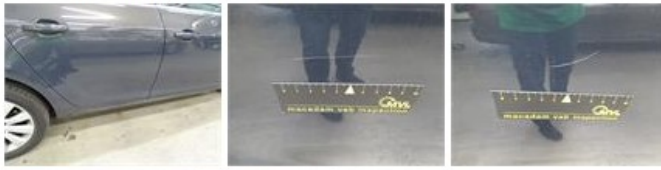
Wing F L, Bump(s) and scratch(es), LI - Repair and paint (complete) 220,18



Ignition key, Missing, E - Replace 150,00

No pictures to display

Door R R, Scratch(es), LI - Repair and paint (complete) 318,35



Wing R R, Bad repair, Acceptable 0,00



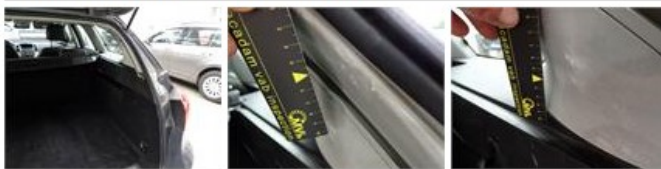
Bonnet, Bump(s), PDR - Knock out without painting 63,00



Internal Boot Lining L, Damaged, Smart repair 110,64



Internal Boot Lining R, Damaged, Smart repair 110,64



Bumper R, Scratch(es), LI - Repair and paint (complete) 211,80

