


**RENAULT Grand Scenic: 1EGP462**

|                         |                          |              |  |
|-------------------------|--------------------------|--------------|--|
| Vinnnumber:             | <b>VF1JZ00AD47942168</b> | Versionname: | <b>GR.SCENIC Energ.Privilège 5pl.FAP 130PK</b> |
| First Registrationdate: | <b>27/11/2012</b>        | Fiscalpower: |  |
| Expertise Mileage:      | <b>144113</b>            | Power Kw:    | <b>96</b>                                      |
| Bodytype:               | <b>Hatchback</b>         | Body color:  | <b>Black</b>                                   |
| Gearbox:                | <b>MAN 6 VIT</b>         | Paint type:  | <b>Metalic</b>                                 |
| Transmission:           | <b>Front</b>             | Rims summer: | <b>Aluminium</b>                               |
| Fueltype:               | <b>Diesel</b>            | Oil level:   | <b>OK</b>                                      |
| Battery functioning:    | <b>Yes</b>               | Parking lot: | <b>3304</b>                                    |
| Number of doors:        | <b>5</b>                 |              |  |
| Number of seats:        | <b>5</b>                 |              |  |
| Number head rests:      | <b>5</b>                 |              |  |
| Rims summer:            | <b>Aluminium</b>         |              |  |
| Category:               | <b>Passenger Car</b>     |              |  |
| Oil level:              | <b>OK</b>                |              |  |

**Options**

|  |                       |
|--|-----------------------|
| Radio CD   | Seats electric F L    |
| Windows electric F                                   | Seats electric F R    |
| Windows electric R                                   | Sun Roof electric     |
| Cruise Control                                       | Panoramic roof        |
| Steering wheel multifunctional                       | Central consol F      |
| Seats F heated                                       | Front parking sensors |
| Radio multimedia                                     | Rear parking sensors  |
| Type of headlighting <b>Headlighting Xenon</b>       |                       |
| Type of GPS <b>GPS big screen color</b>              |                       |
| Type of Lining <b>Lining leather and alcantara</b>   |                       |
| Type of climate control <b>Autom climate control</b> |                       |

**Limited Technical Inspection**

|                     |           |                     |            |
|---------------------|-----------|---------------------|------------|
| Airco functioning   | <b>OK</b> | Battery functioning | <b>Yes</b> |
| Tires wear profile  | <b>OK</b> | Power steering      | <b>Yes</b> |
| Idle position       | <b>OK</b> | Sound engine        | <b>OK</b>  |
| Engine startingtime | <b>OK</b> | Clutch test         | <b>OK</b>  |
| Exhaust gass        | <b>OK</b> | Wiper fluid level   | <b>OK</b>  |
| Handbrake           | <b>OK</b> | Transmission        | <b>OK</b>  |
|                     |           | Lighting            | <b>OK</b>  |
|                     |           | Wiperblades         | <b>OK</b>  |

**Degree of wear**

|               |                                  |                      |       |                      |
|---------------|----------------------------------|----------------------|-------|----------------------|
|               | <b>205/55/16/91 V LightMetal</b> |                      |       |                      |
| Winter tyres: | Fr.L.                            | <b>Pirelli: 4 mm</b> | Fr.R. | <b>Pirelli: 4 mm</b> |
|               | Re.L.                            | <b>Pirelli: 5 mm</b> | Re.R. | <b>Pirelli: 5 mm</b> |

**Assistance equipment**

|             |            |      |            |
|-------------|------------|------|------------|
| Spare wheel | <b>Yes</b> | Jack | <b>Yes</b> |
|-------------|------------|------|------------|

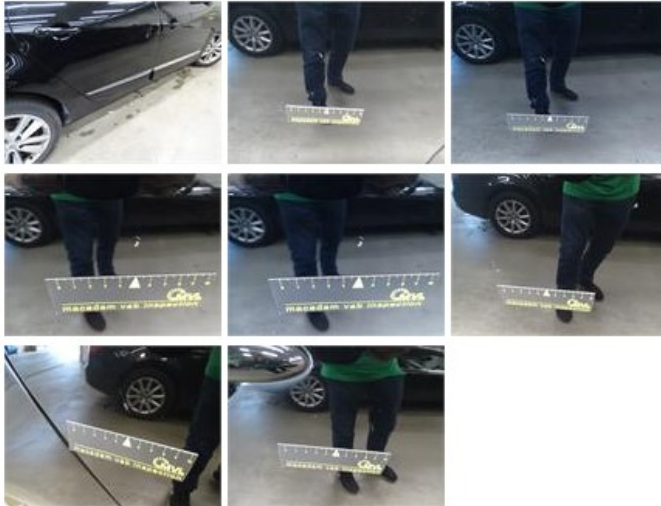
|   |        |
|---|--------|
| Total cost ex VAT   | 926,78 |
| Bonnet, Chemical polution, LI - Repair and paint (complete) | 290,08 |



|   |        |
|---|--------|
| Alloy rim R L, Scratch(es), Acceptable                  | 0,00   |
| <i>No pictures to display</i>                           |        |
| Door F R, Scratch(es), LI - Repair and paint (complete) | 318,35 |



|   |        |
|---|--------|
| Door R R, Scratch(es), LI - Repair and paint (complete) | 318,35 |
|---|--------|



|  |      |
|--|------|
| Door R L, Scratch(es), Acceptable                  | 0,00 |
| <i>No pictures to display</i>                      |      |
| Bumper R, Scratch(es), Acceptable                  | 0,00 |
| <i>No pictures to display</i>                      |      |
| Door F L, Scratch(es), Acceptable                  | 0,00 |
| <i>No pictures to display</i>                      |      |
| Bumper moulding F M, Unclashed, N - Mount/Dismount | 0,00 |
| <i>No pictures to display</i>                      |      |
| Wing F R, Scratch(es), Acceptable                  | 0,00 |
| <i>No pictures to display</i>                      |      |