



**TOYOTA AVENSIS TOURING SPORTS: 1NSS599**

Vinnumber:	<b>SB1EG76L30E121334</b>	Versionname:	<b>1.8 VALVEMATIC DYNAMIC+ MD S AUTO</b>
First Registrationdate:	<b>18/04/2016</b>	Fiscalpower:	
Expertise Mileage:	<b>21285</b>	Power Kw:	<b>108</b>
Bodytype:		Body color:	<b>Blue</b>
Gearbox:	<b>Automatic</b>	Paint type:	<b>Metalic</b>
Transmission:	<b>Front</b>	Rims summer:	<b>Aluminium</b>
Fueltype:	<b>Petrol</b>	Oil level:	<b>OK</b>
Maintenance:	<b>OK</b>	Parking lot:	<b>4409</b>
Battery functioning:	<b>Yes</b>		
Number of doors:	<b>5</b>		
Number of seats:	<b>5</b>		
Number head rests:	<b>5</b>		
Rims summer:	<b>Aluminium</b>		
Category:	<b>Passenger Car</b>		
Oil level:	<b>OK</b>		
Registration Certificate Car (BE):	<b>Yes</b>		

**Options**

GPS storage		Central consol F
GPS storage	<b>HD</b>	Luggage cover
Windows electric F		Rear parking sensors
Windows electric R		
Cruise Control		
Steering wheel multifunctional		
Type of headlighting	<b>Headlighting Xenon</b>	
Type of GPS	<b>GPS big screen color</b>	
Type of Lining	<b>Lining leather</b>	
Type of climate control	<b>Autom climate control</b>	

**Limited Technical Inspection**

Airco functioning	<b>OK</b>	Battery functioning	<b>Yes</b>
Tires wear profile	<b>OK</b>	Power steering	<b>Yes</b>
Idle position	<b>OK</b>	Sound engine	<b>OK</b>
Engine startingtime	<b>OK</b>	Clutch test	<b>OK</b>
Exhaust gass	<b>OK</b>	Wiper fluid level	<b>OK</b>
Handbrake	<b>OK</b>	Transmission	<b>OK</b>
		Lighting	<b>OK</b>
		Wiperblades	<b>OK</b>

**Degree of wear**

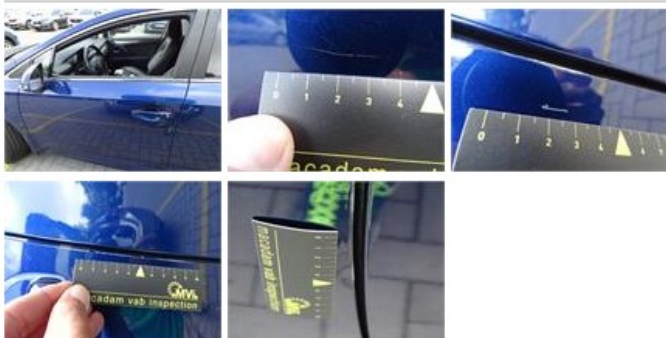
	<b>225/45/18/95 W LightMetal</b>			
Summer tyres:	Fr.L.	<b>Bridgestone: 6 mm</b>	Fr.R.	<b>Bridgestone: 6 mm</b>
	Re.L.	<b>Bridgestone: 7 mm</b>	Re.R.	<b>Bridgestone: 7 mm</b>

**Assistance equipment**

Repair kit	<b>Yes</b>	Compressor	<b>Yes</b>
------------	------------	------------	------------

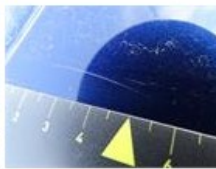
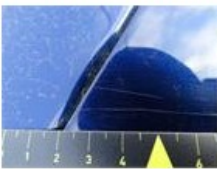
Total cost ex VAT 645,71

Door F L, Scratch(es), LI - Repair and paint (complete) 318,35



Rear spoiler, Scratch(es), LI - Repair and paint (complete)

115,56



Roof pillar R, Scratch(es), Acceptable 0,00

*No pictures to display*

Bumper R, Scratch(es), LI - Repair and paint (complete) 211,80



Alloy rim R R, Scratch(es), Acceptable 0,00

*No pictures to display*

Door R L, Scratch(es), Acceptable 0,00

*No pictures to display*