


BMW 1: 1GGL223

Vinnnumber:	WBA1C91050J521138	Versionname:	1 HATCH 116d Eff.Dyn.Ed. 116PK
First Registrationdate:	3/02/2014	Fiscalpower:	
Expertise Mileage:	49354	Power Kw:	85
Bodytype:		Body color:	Grey
Gearbox:	MAN 6 VIT	Paint type:	Metalic
Transmission:	Back	Rims summer:	Aluminium
Fueltype:	Diesel	Oil level:	OK
Maintenance:	NOT OK	Parking lot:	3227
Maintenance	SINDS 1/2016 -25000KM		
Battery functioning:	Yes		
Number of doors:	5		
Number of seats:	5		
Number head rests:	5		
Rims summer:	Aluminium		
Category:	Passenger Car		
Oil level:	OK		
Registration Certificate Car (BE):	Yes		

Options

Radio CD		Central consol F
GPS storage	HD	Luggage cover
GPS storage		Rear parking sensors
Windows electric F		
Windows electric R		
Cruise Control		
Steering wheel multifunctional		
Type of headlighting	Headlighting Halogen	
Type of GPS	GPS big screen color	
Type of Lining	Lining leather	
Type of climate control	Autom climate control	

Limited Technical Inspection

Airco functioning	OK	Battery functioning	Yes
Tires wear profile	OK	Power steering	Yes
Idle position	OK	Sound engine	OK
Engine startingtime	OK	Clutch test	OK
Exhaust gass	OK	Wiper fluid level	OK
Handbrake	OK	Transmission	OK
		Lighting	OK
		Wiperblades	OK

Degree of wear

	205/55/16/91 W LightMetal			
Summer tyres:	Fr.L.	Firestone: 7 mm	Fr.R.	Firestone: 7 mm
	Re.L.	Firestone: 7 mm	Re.R.	Firestone: 7 mm

Assistance equipment

Repair kit	Yes	Compressor	Yes
------------	------------	------------	------------

Total cost ex VAT	1258,95
-------------------	----------------

Roof, Bump(s), Acceptable	0,00
---------------------------	-------------

No pictures to display

Maintenance, Maintenance, Execute	0,00
-----------------------------------	-------------



Alloy rim F R, Scratch(es), LI - Repair and paint (complete)	95,00
--	--------------

No pictures to display

Door R L, Bump(s) and scratch(es), Acceptable	0,00
---	-------------

No pictures to display

Mirror side blinker L, Broken, E - Replace

30,00



Front bumper, Scratch(es), LI - Repair and paint (complete)

211,80



Alloy rim R R, Scratch(es), LI - Repair and paint (complete)

95,00



Wing F R, Scratch(es), Acceptable

0,00

No pictures to display

Bonnet, Damaged, Le - Replace and paint

74,60



Wing R L, Bump(s), Acceptable

0,00

No pictures to display

Alloy rim F L, Scratch(es), LI - Repair and paint (complete)

95,00



Wing F L, Bump(s), Acceptable

0,00



Trunk lid covering R, Scratch(es), Acceptable

0,00

No pictures to display

Bumper R, Scratch(es), LI - Repair and paint (complete)

211,80



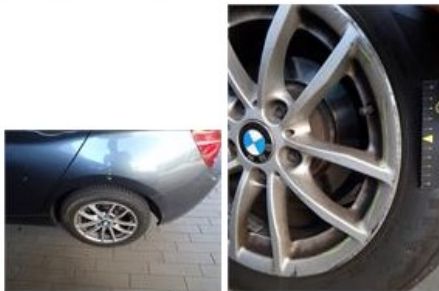
Bumper grille, Broken, E - Replace 32,40



Tailgate, Scratch(es), Acceptable 0,00

No pictures to display

Alloy rim R L, Scratch(es), LI - Repair and paint (complete) 95,00



Door F L, Bump(s) and scratch(es), LI - Repair and paint (complete) 318,35

