



<b>BMW 5: HA9231</b>			
Vinnnumber:	<b>WBA5K71030D802314</b>	Versionname: <b>5 TOURING 535dAX 313PK Aut.</b>	
First Registrationdate:	<b>8/12/2015</b>	Fiscalpower:	
Expertise Mileage:	<b>172976</b>	Power Kw:	<b>230</b>
Bodytype:	<b>Break</b>	Body color:	<b>Dark Brown</b>
Gearbox:	<b>Automatic</b>	Paint type:	<b>Metalic</b>
Transmission:		Rims summer:	<b>Aluminium</b>
Fueltype:	<b>Diesel</b>	Oil level:	<b>OK</b>
Battery functioning:	<b>Yes</b>	Parking lot:	<b>2424</b>
Number of doors:	<b>5</b>		
Number of seats:	<b>5</b>		
Number head rests:	<b>5</b>		
Rims summer:	<b>Aluminium</b>		
Category:	<b>Passenger Car</b>		
Oil level:	<b>OK</b>		

<b>Options</b>	
Radio CD	Sun Roof electric
Windows electric F	Panoramic roof
Windows electric R	Central consol F
Cruise Control	Luggage cover
Steering wheel multifunction	Front parking sensors
Seats F heated	Rear parking sensors
Radio multimedia	
Type of headlighting	<b>Headlighting Halogen</b>
Type of GPS	<b>GPS big screen color</b>
Type of Lining	<b>Lining leather</b>
Type of climate control	<b>Autom climate control</b>

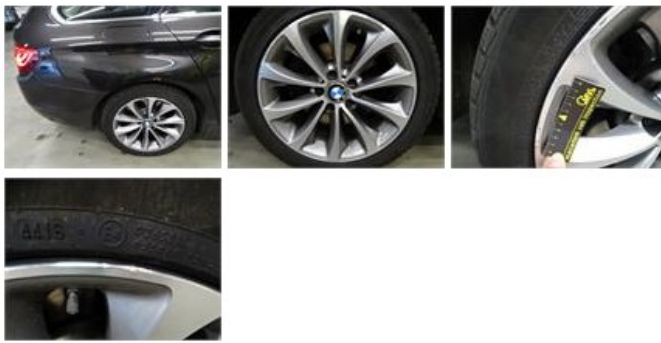
<b>Limited Technical Inspection</b>			
Airco functioning	<b>OK</b>	Battery functioning	<b>Yes</b>
Tires wear profile	<b>OK</b>	Power steering	<b>Yes</b>
Idle position	<b>OK</b>	Sound engine	<b>OK</b>
Engine startingtime	<b>OK</b>	Clutch test	<b>OK</b>
Exhaust gass	<b>OK</b>	Wiper fluid level	<b>OK</b>
Handbrake	<b>OK</b>	Transmission	<b>OK</b>
		Lighting	<b>OK</b>
		Wiperblades	<b>OK</b>

<b>Degree of wear</b>				
	<b>245/45/18/100 Y LightMetal</b>			
Summer tyres:	Fr.L.	<b>Continental: 4 mm</b>	Fr.R.	<b>Continental: 4 mm</b>
	Re.L.	<b>Continental: 4 mm</b>	Re.R.	<b>Continental: 4 mm</b>

<b>Assistance equipment</b>	
	Runflat <b>Yes</b>
Total cost ex VAT	512,80
Alloy rim F R polished, Scratch(es), LI - Repair and paint (complete)	95,00



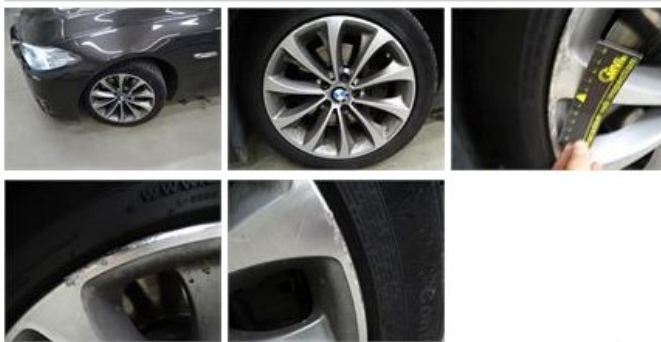
Alloy rim R R polished, Scratch(es), LI - Repair and paint (complete)	95,00
---	-------



Reversible boot mat, Dirty, Cleaning 50,00



Alloy rim F L polished, Scratch(es), LI - Repair and paint (complete) 95,00



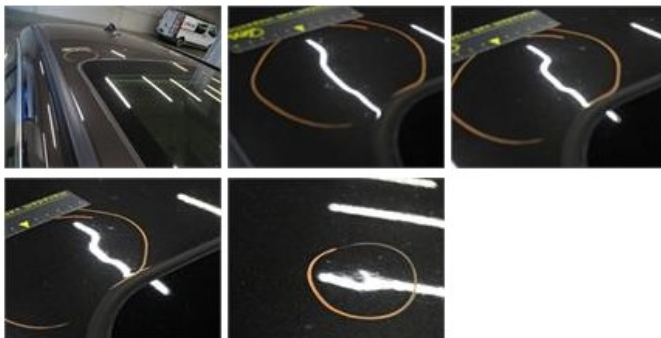
Door F R, Bump(s), Acceptable 0,00

No pictures to display

Alloy rim R L polished, Scratch(es), LI - Repair and paint (complete) 95,00



Roof, Bump(s), PDR - Knock out without painting 82,80



Wing R R, Scratch(es), Acceptable 0,00

No pictures to display

Bumper R, Scratch(es), Acceptable 0,00

No pictures to display