


**MERCEDES B: 1HGK236**

Vinnumber:	<b>WDD2462121J278469</b>	Versionname:	<b>B 180CDI BE Edition 109PK</b>
First Registrationdate:	<b>15/07/2014</b>	Fiscalpower:	
Expertise Mileage:	<b>123468</b>	Power Kw:	<b>80</b>
Bodytype:		Body color	<b>Grey</b>
Gearbox:	<b>MAN 6 VIT</b>	Paint type	<b>Metalic</b>
Transmission:		Rims summer	<b>Aluminium</b>
Fueltype:	<b>Diesel</b>	Oil level	<b>OK</b>
Battery functioning	<b>Yes</b>	Parking lot	<b>2116</b>
Number of doors	<b>5</b>		
Number of seats	<b>5</b>		
Number head rests	<b>5</b>		
Rims summer	<b>Aluminium</b>		
Category	<b>Passenger Car</b>		
Oil level	<b>OK</b>		
Registration Certificate Car (BE)	<b>Yes</b>		

**Options**

Radio CD	Central consol F
Windows electric F	Luggage cover
Windows electric R	Front parking sensors
Cruise Control	Rear parking sensors
Steering wheel multifunctional	
Seats F heated	
Radio multimedia	
Type of headlighting	<b>Headlighting Xenon</b>
Type of GPS	<b>GPS big screen color</b>
Type of Lining	<b>Lining fabrics</b>
Type of climate control	<b>Autom climate control</b>

**Limited Technical Inspection**

Airco functioning	<b>OK</b>	Battery functioning	<b>Yes</b>
Tires wear profile	<b>OK</b>	Power steering	<b>Yes</b>
Idle position	<b>OK</b>	Sound engine	<b>OK</b>
Engine startingtime	<b>OK</b>	Clutch test	<b>OK</b>
Exhaust gass	<b>OK</b>	Wiper fluid level	<b>OK</b>
Handbrake	<b>OK</b>	Transmission	<b>OK</b>
		Lighting	<b>OK</b>
		Wiperblades	<b>OK</b>

**Degree of wear**

<b>205/55/16/91 V LightMetal</b>				
Summer tyres:	Fr.L.	<b>Continental: 6 mm</b>	Fr.R.	<b>Continental: 6 mm</b>
	Re.L.	<b>Michelin: 4 mm</b>	Re.R.	<b>Michelin: 4 mm</b>

**Assistance equipment**

Repair kit	<b>No</b>	Compressor	<b>No</b>
Total cost ex VAT			<b>1108,30</b>
Trunk lid covering R, Damaged, Smart repair			<b>20,00</b>

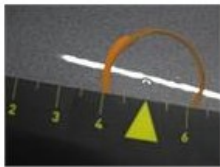
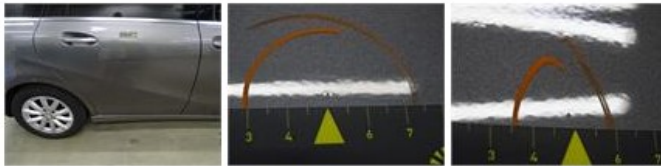


Alloy rim R L, Scratch(es), Acceptable	<b>0,00</b>
<i>No pictures to display</i>	
Wing R L, Scratch(es), Acceptable	<b>0,00</b>
<i>No pictures to display</i>	
Trunk lid covering R, Scratch(es), Acceptable	<b>0,00</b>



Door R R, Bad repair, Acceptable

0,00



Alloy rim F R, Scratch(es), LI - Repair and paint (complete)

95,00



Wing R R, Bump(s) and scratch(es), Acceptable

0,00

No pictures to display

Door F L, Scratch(es), Acceptable

0,00

No pictures to display

Tyre repair kit, Missing, E - Replace

250,00

No pictures to display

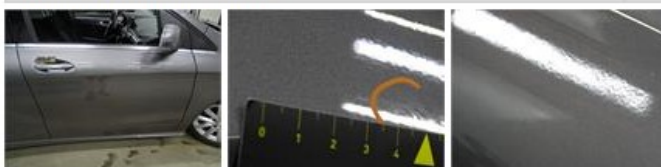
Bumper R, Scratch(es), Acceptable

0,00

No pictures to display

Door F R, Bad repair, Acceptable

0,00



Roof, Chemical polution, LI - Repair and paint (complete)

481,50



Sill outer R, Strained , I - Repair

50,00



Front bumper, Bump(s) and scratch(es), LI - Repair and paint (complete)

211,80

