


**FORD Grand C-Max: MW7944**

Vinnumber:	<b>WF0HXXWPBHDP33667</b>	Versionname:	<b>GRAND C-MAX Titanium</b>
First Registrationdate:	<b>17/06/2013</b>	Fiscalpower:	<b>136PK</b>
Expertise Mileage:	<b>88645</b>	Power Kw:	<b>100</b>
Bodytype:		Body color	<b>Blue</b>
Gearbox:	<b>MAN 6 VIT</b>	Paint type	<b>Metalic</b>
Transmission:	<b>Front</b>	Rims summer	<b>Aluminium</b>
Fueltype:	<b>Diesel</b>	Oil level	<b>OK</b>
Maintenance	<b>OK</b>	Parking lot	<b>3410</b>
Battery functioning	<b>Yes</b>		
Number of doors	<b>5</b>		
Number of seats	<b>7</b>		
Number head rests	<b>7</b>		
Rims summer	<b>Aluminium</b>		
Category	<b>Passenger Car</b>		
Oil level	<b>OK</b>		
Registration Certificate Car (BE)	<b>Yes</b>		

**Options**

Radio CD		Central consol F
GPS storage	<b>SD</b>	Luggage cover
GPS storage		Front parking sensors
Windows electric F		Rear parking sensors
Windows electric R		
Cruise Control		
Steering wheel multifunctional		
Seats F heated		
Type of headlighting	<b>Headlighting Halogen</b>	
Type of GPS	<b>GPS big screen color</b>	
Type of Lining	<b>Lining leather</b>	
Type of climate control	<b>Autom climate control</b>	

**Limited Technical Inspection**

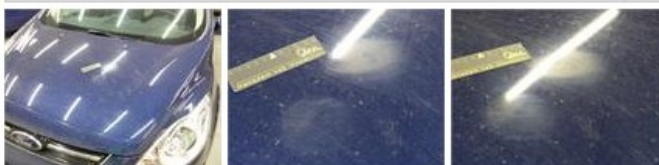
Airco functioning	<b>OK</b>	Battery functioning	<b>Yes</b>
Tires wear profile	<b>OK</b>	Power steering	<b>Yes</b>
Idle position	<b>OK</b>	Sound engine	<b>OK</b>
Engine startingtime	<b>OK</b>	Clutch test	<b>OK</b>
Exhaust gass	<b>OK</b>	Wiper fluid level	<b>OK</b>
Handbrake	<b>OK</b>	Transmission	<b>OK</b>
		Lighting	<b>OK</b>
		Wiperblades	<b>OK</b>

**Degree of wear**

	<b>215/55/16/92 V LightMetal</b>			
Winter tyres:	Fr.L.	<b>Michelin: 7 mm</b>	Fr.R.	<b>Michelin: 7 mm</b>
	Re.L.	<b>Michelin: 8 mm</b>	Re.R.	<b>Michelin: 8 mm</b>

**Assistance equipment**

Spare wheel	<b>Yes</b>	Jack	<b>Yes</b>
Total cost ex VAT			903,03
Alloy rim R L, Scratch(es), Acceptable			0,00
<i>No pictures to display</i>			
Alloy rim R R, Scratch(es), Acceptable			0,00
<i>No pictures to display</i>			
Bonnet, Chemical polution, LI - Repair and paint (complete)			290,08

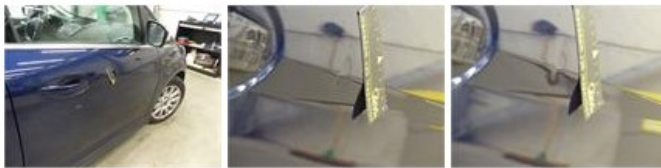




Front bumper, Scratch(es), Acceptable	0,00
<i>No pictures to display</i>	
Alloy rim F L, Scratch(es), Acceptable	0,00
<i>No pictures to display</i>	
Brand badge R, Deformed, Acceptable	0,00
<i>No pictures to display</i>	
Alloy rim F R, Scratch(es), Acceptable	0,00
<i>No pictures to display</i>	
Door F L, Scratch(es), Acceptable	0,00
<i>No pictures to display</i>	
Wing R L, Bump(s), PDR - Knock out without painting	82,80



Door R R, Scratch(es), Acceptable	0,00
<i>No pictures to display</i>	
Door F R, Bump(s) and scratch(es), LI - Repair and paint (complete)	318,35



Bumper R, Scratch(es), LI - Repair and paint (complete)	211,80
---	--------

