


**FORD Focus: 1FTV320**

Vinnnumber:	<b>WF0LXXGCBLDP32610</b>	Versionname:	<b>FOCUS CLIP. EConetic Trend 88g 105PK</b>
First Registrationdate:	<b>23/10/2013</b>	Fiscalpower:	
Expertise Mileage:	<b>91969</b>	Power Kw:	<b>77</b>
Bodytype:	<b>Break</b>	Body color	<b>Light Grey</b>
Gearbox:	<b>MAN 6 VIT</b>	Paint type	<b>Metalic</b>
Transmission:		Rims summer	<b>Steel</b>
Fueltype:	<b>Diesel</b>	Oil level	<b>OK</b>
Battery functioning	<b>Yes</b>	Parking lot	<b>2226</b>
Number of doors	<b>5</b>		
Number of seats	<b>5</b>		
Number head rests	<b>5</b>		
Rims summer	<b>Steel</b>		
Category	<b>Passenger Car</b>		
Oil level	<b>OK</b>		
Registration Certificate Car (BE)	<b>Yes</b>		

**Options**

Radio CD		Luggage cover	
Windows electric F		Rear parking sensors	
Windows electric R			
Cruise Control			
Steering wheel multifunctional			
Radio multimedia			
Type of headlighting	<b>Headlighting Halogen</b>		
Type of GPS	<b>GPS big screen color</b>		
Type of Lining	<b>Lining fabrics</b>		
Type of climate control	<b>Autom climate control</b>		

**Limited Technical Inspection**

Airco functioning	<b>OK</b>	Battery functioning	<b>Yes</b>
Tires wear profile	<b>OK</b>	Power steering	<b>Yes</b>
Idle position	<b>OK</b>	Sound engine	<b>OK</b>
Engine startingtime	<b>OK</b>	Clutch test	<b>OK</b>
Exhaust gass	<b>OK</b>	Wiper fluid level	<b>OK</b>
Handbrake	<b>OK</b>	Transmission	<b>OK</b>
		Lighting	<b>OK</b>
		Wiperblades	<b>OK</b>

**Degree of wear**

205/55/16/91 H Steel				
Summer tyres:	Fr.L.	<b>Michelin: 5 mm</b>	Fr.R.	<b>Michelin: 5 mm</b>
	Re.L.	<b>Goodyear: 6 mm</b>	Re.R.	<b>Goodyear: 6 mm</b>

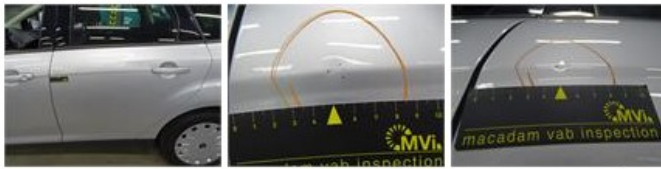
**Assistance equipment**

Emergency spare wheel	<b>Yes</b>
-----------------------	------------

Total cost ex VAT	538,53
Wing R L, Scratch(es), Acceptable	0,00
<i>No pictures to display</i>	
Wing R R, Scratch(es), Acceptable	0,00
<i>No pictures to display</i>	
Tailgate, Scratch(es), Acceptable	0,00
<i>No pictures to display</i>	
Wheel cover R R, Scratch(es), Acceptable	0,00
<i>No pictures to display</i>	
Wing F L, Bump(s) and scratch(es), LI - Repair and paint (complete)	220,18



Door R L, Bump(s) and scratch(es), LI - Repair and paint (complete) 318,35



Front bumper, Difference in color, Acceptable 0,00



Bonnet, Bad repair, Acceptable 0,00

