


RENAULT CLIO: 1KAT100

Vinnnumber:	VF15RJL0H52519241	Versionname:	1.5 ENERGY DCI 90E EXPRESSION
First Registrationdate:	20/03/2015	Fiscalpower:	
Expertise Mileage:	160849	Power Kw:	66
Bodytype:	Hatchback	Body color:	Light Grey
Gearbox:	MAN 5 VIT	Paint type:	Metalic
Transmission:		Rims summer:	Steel
Fueltype:	Diesel	Oil level:	OK
Battery functioning:	Yes	Parking lot:	2532
Number of doors:	5		
Number of seats:	5		
Number head rests:	5		
Rims summer:	Steel		
Category:	Passenger Car		
Oil level:	OK		
Registration Certificate Car (BE):	Yes		

Options

Windows electric F	Luggage cover
Cruise Control	Rear parking sensors
Steering wheel multifunction	
Radio multimedia	
Type of headlighting:	Headlighting Halogen
Type of GPS:	GPS big screen color
Type of Lining:	Lining fabrics
Type of climate control:	Manual climate control

Limited Technical Inspection

Airco functioning	OK	Battery functioning	Yes
Tires wear profile	OK	Power steering	Yes
Idle position	OK	Sound engine	OK
Engine startingtime	OK	Clutch test	OK
Exhaust gass	OK	Wiper fluid level	OK
Handbrake	OK	Transmission	OK
		Lighting	OK
		Wiperblades	OK

Degree of wear

	185/65/15/92 T Steel			
Summer tyres:	Fr.L.	Michelin: 2 mm	Fr.R.	Michelin: 2 mm
	Re.L.	Michelin: 3 mm	Re.R.	Michelin: 3 mm

Assistance equipment

Repair kit	Yes	Compressor	Yes
------------	------------	------------	------------

Total cost ex VAT	3854,04
Wheel cover R R, Scratch(es), Acceptable	0,00
<i>No pictures to display</i>	
Door R L, Scratch(es), LI - Repair and paint (complete)	254,68



Bonnet, Bump(s), Acceptable	0,00
<i>No pictures to display</i>	
Door F L, Scratch(es), LI - Repair and paint (complete)	254,68



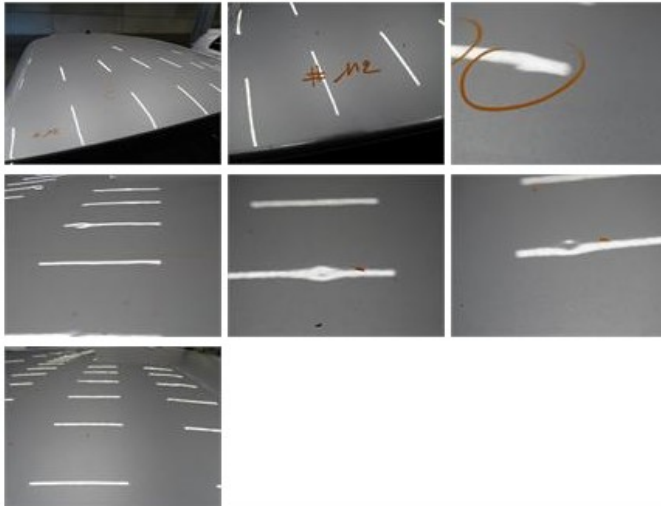
Protection plate M, Tear, E - Replace 290,00



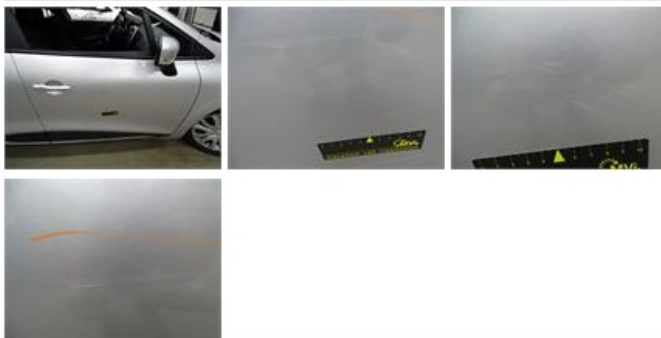
Wheel cover R L, Scratch(es), Acceptable 0,00

No pictures to display

Roof, Hail damage, PDR - Hail 2800,00



Door F R, Scratch(es), LI - Repair and paint (complete) 254,68



Wheel cover F L, Scratch(es), Acceptable 0,00

No pictures to display

Wheel cover F R, Scratch(es), Acceptable 0,00

No pictures to display