



RENAULT CLIO: 1RFF007

| | | | |
|-----------------------------------|--------------------------|--------------|--------------------------------------|
| Vinnnumber: | VF15R0J0A56606070 | Versionname: | 1.5 ENERGY DCI 90E EXPRESSION |
| First Registrationdate: | 7/12/2016 | Fiscalpower: | |
| Expertise Mileage: | 48724 | Power Kw: | 66 |
| Bodytype: | Hatchback | Body color | Light Grey |
| Gearbox: | MAN 5 VIT | Paint type | Metalic |
| Transmission: | | Rims summer | Steel |
| Fueltype: | Diesel | Oil level | OK |
| Battery functioning | Yes | Parking lot | 1710 |
| Number of doors | 5 | | |
| Number of seats | 5 | | |
| Number head rests | 5 | | |
| Rims summer | Steel | | |
| Category | Passenger Car | | |
| Oil level | OK | | |
| Registration Certificate Car (BE) | Yes | | |

Options

| | |
|--------------------------------|-------------------------------|
| Windows electric F | Central consol F |
| Cruise Control | Luggage cover |
| Steering wheel multifunctional | Rear parking sensors |
| Radio multimedia | |
| Type of headlighting | Headlighting Halogen |
| Type of GPS | GPS big screen color |
| Type of Lining | Lining fabrics |
| Type of climate control | Manual climate control |

Limited Technical Inspection

| | | | |
|---------------------|-----------|---------------------|------------|
| Airco functioning | OK | Battery functioning | Yes |
| Tires wear profile | OK | Power steering | Yes |
| Idle position | OK | Sound engine | OK |
| Engine startingtime | OK | Clutch test | OK |
| Exhaust gass | OK | Wiper fluid level | OK |
| Handbrake | OK | Transmission | OK |
| | | Lighting | OK |
| | | Wiperblades | OK |

Degree of wear

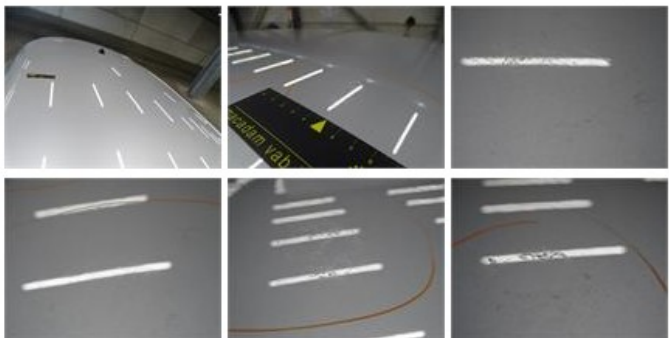
| | | | | |
|---------------|-----------------------------|-----------------------|-------|-----------------------|
| | 185/65/15/92 T Steel | | | |
| Summer tyres: | Fr.L. | Michelin: 5 mm | Fr.R. | Michelin: 5 mm |
| | Re.L. | Michelin: 5 mm | Re.R. | Michelin: 5 mm |

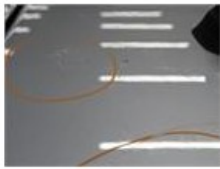
Assistance equipment

| | | | |
|------------|------------|------------|------------|
| Repair kit | Yes | Compressor | Yes |
|------------|------------|------------|------------|

| | |
|-------------------|---------------|
| Total cost ex VAT | 409,20 |
|-------------------|---------------|

| | |
|--|---------------|
| Roof, Chemical pollution, LI - Repair and paint (complete) | 385,20 |
|--|---------------|





Wheel cover F R, Damaged, E - Replace

24,00

