



**RENAULT CLIO: 1PDT890**

Vinnnumber:	<b>VF15R0J0A55436089</b>	Versionname:	<b>1.5 ENERGY DCI 90E EXPRESSION</b>
First Registrationdate:	<b>13/06/2016</b>	Fiscalpower:	
Expertise Mileage:	<b>43321</b>	Power Kw:	<b>66</b>
Bodytype:	<b>Hatchback</b>	Body color	<b>Light Grey</b>
Gearbox:	<b>MAN 5 VIT</b>	Paint type	<b>Metalic</b>
Transmission:		Rims summer	<b>Steel</b>
Fueltype:	<b>Diesel</b>	Oil level	<b>OK</b>
Battery functioning	<b>Yes</b>	Parking lot	<b>2631</b>
Number of doors	<b>5</b>		
Number of seats	<b>5</b>		
Number head rests	<b>5</b>		
Rims summer	<b>Steel</b>		
Category	<b>Passenger Car</b>		
Oil level	<b>OK</b>		
Registration Certificate Car (BE)	<b>Yes</b>		

**Options**

Windows electric F		Luggage cover	
Cruise Control		Rear parking sensors	
Steering wheel multifunction			
Radio multimedia			
Type of headlighting	<b>Headlighting Halogen</b>		
Type of GPS	<b>GPS big screen color</b>		
Type of Lining	<b>Lining fabrics</b>		
Type of climate control	<b>Manual climate control</b>		

**Limited Technical Inspection**

Airco functioning	<b>OK</b>	Battery functioning	<b>Yes</b>
Tires wear profile	<b>OK</b>	Power steering	<b>Yes</b>
Idle position	<b>OK</b>	Sound engine	<b>OK</b>
Engine startingtime	<b>OK</b>	Clutch test	<b>OK</b>
Exhaust gass	<b>OK</b>	Wiper fluid level	<b>OK</b>
Handbrake	<b>OK</b>	Transmission	<b>OK</b>
		Lighting	<b>OK</b>
		Wiperblades	<b>OK</b>

**Degree of wear**

	<b>185/65/15/92 T Steel</b>			
Summer tyres:	Fr.L.	<b>Michelin: 5 mm</b>	Fr.R.	<b>Michelin: 5 mm</b>
	Re.L.	<b>Michelin: 6 mm</b>	Re.R.	<b>Michelin: 6 mm</b>

**Assistance equipment**

Repair kit	<b>Yes</b>	Compressor	<b>Yes</b>
------------	------------	------------	------------

Total cost ex VAT	<b>2420,91</b>
-------------------	----------------

Headlight L, Damaged, E - Replace	<b>336,00</b>
-----------------------------------	---------------



Door R R, Scratch(es), Acceptable	<b>0,00</b>
-----------------------------------	-------------

No pictures to display

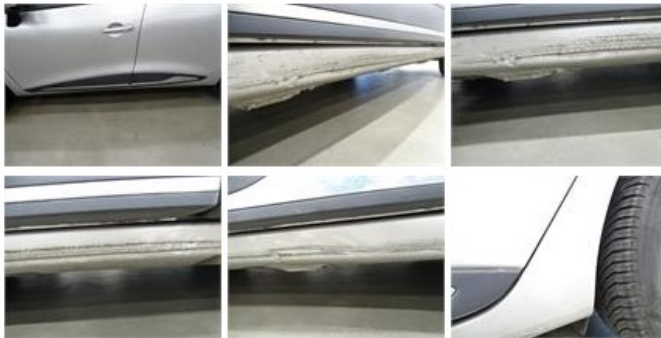
Wing F L, Damaged, Le - Replace and paint	<b>448,01</b>
---	---------------



Wheel cover R L, Damaged, E - Replace 24,00



Sill outer L, Bump(s) and scratch(es), LI - Repair and paint (complete) 248,40



Bonnet, Bump(s), LI - Repair and paint (complete) 232,06



Wheel cover F L, Damaged, E - Replace 24,00



Wheel cover F R, Scratch(es), Acceptable 0,00

No pictures to display

Wing R L, Scratch(es), LI - Repair and paint (complete) 246,56



Door R L, Bump(s), LI - Repair and paint (complete) 254,68





Front bumper, Damaged, Le - Replace and paint

607,20

