



BMW 1: 1GTK331

Vinnnumber:	WBA1C910X0J524133	Versionname:	1 HATCH 116d Eff.Dyn.Ed. 116PK
First Registrationdate:	24/04/2014	Fiscalpower:	
Expertise Mileage:	120370	Power Kw:	85
Bodytype:		Body color	Black
Gearbox:	MAN 6 VIT	Paint type	Metalic
Transmission:	Back	Rims summer	Aluminium
Fueltype:	Diesel	Oil level	OK
Maintenance	OK	Parking lot	4203
Battery functioning	Yes		
Number of doors	5		
Number of seats	5		
Number head rests	5		
Rims summer	Aluminium		
Category	Passenger Car		
Oil level	OK		
Registration Certificate Car (BE)	Yes		

Options

GPS storage		Central consol F	
GPS storage	HD	Luggage cover	
Windows electric F		Type of Tow bar	No Tow bar
Windows electric R			
Type of headlighting	Headlighting Halogen		
Type of GPS	GPS big screen color		
Type of Lining	Lining fabrics		
Type of climate control	Manual climate control		

Limited Technical Inspection

Airco functioning	OK	Battery functioning	Yes
Tires wear profile	OK	Power steering	Yes
Idle position	OK	Sound engine	OK
Engine startingtime	OK	Clutch test	OK
Exhaust gass	OK	Wiper fluid level	OK
Handbrake	OK	Transmission	OK
		Lighting	OK
		Wiperblades	OK

Degree of wear

	205/55/16/91 V LightMetal			
Summer tyres:	Fr.L.	Bridgestone: 7 mm	Fr.R.	Bridgestone: 7 mm
	Re.L.	Michelin: 0 mm	Re.R.	Michelin: 4 mm

Assistance equipment

Repair kit	Yes	Compressor	Yes
------------	------------	------------	------------

Total cost ex VAT 618,15

Bumper R, Bump(s) and scratch(es), LI - Repair and paint (complete) 211,80

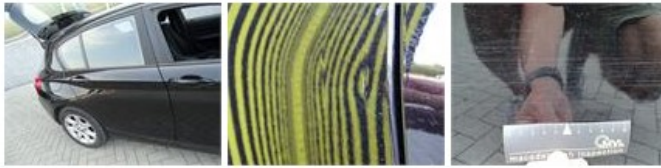


Door F L, Bump(s), PDR - Knock out without painting

63,00



Door R L, Bump(s) and scratch(es), LI - Repair and paint (complete) 318,35



Interior, Dirty, Chemical cleaning 25,00



Wing R R, Scratch(es), Acceptable 0,00

No pictures to display